

Meeting of the:

Regional Services Committee Rōpū Ratonga-a-Rohe

Wednesday 8 May 2024 at 2.00pm

Environment Southland Council Chamber, 220 North Road, Invercargill

24/RS/21

Committee Members

Cr Peter McDonald (Chair)
Cr Paul Evans
Cr Lyndal Ludlow
Cr Jeremy McPhail
Cr Jon Pemberton

Cr Maurice Rodway
Cr Eric Roy (Deputy)
Gail Thompson (*mana whenua appointee*)
Estelle Leask (*mana whenua appointee*)
Chairman Nicol Horrell (*ex officio*)

Agenda

1	Welcome I Haere mai	
2	Apologies I Ngā pa pouri	
3	Declarations of interest	
4	Public forum, petitions and deputations I He huinga tuku korero	
5	Confirmation of minutes I Whakau korero	
	Regional Services Committee – 21 February 2024	4
6	Notification of extraordinary items/urgent business I He panui autaiia hei totoia pakihi	
7	Questions I Patai	
8	Chairman and councillors reports I Ngā purongo-a-tumuaki me ngā kaunihera	
9	Reports	
9.1	Fiordland Marine Guardians Report to Regional Services <i>Representatives will be in attendance to speak to this item</i>	8
9.2	Progress on works and public bodies contracts	10
9.3	Operational Updates – Catchment Integration	30
9.4	Biosecurity and Biodiversity Operational Report Quarter three 2023/24	38
9.5	Te Puka Rakiura Trust Report	47
9.6	Group Work Programme as at 1 May 2024	58
10	Extraordinary/urgent business I Panui autaiia hei totoia pakihi	
11	Public excluded business	62
11.1	Lease Inspection	63



Paul Hulse
General Manager, Integrated Catchment Management

Terms of reference – Regional Services Committee

Council assigns to the committee responsibilities from time to time, and the committee provides advice and reports back to Council on:

- 1 Governance oversight and monitoring of the non regulatory implementation of Council plans, strategies and bylaws including (but not limited to):
 - river corridor concept plans
 - clean heat
 - pollution prevention
 - environmental education
 - land sustainability
 - the Waituna response.
- 2 Managing the relationship of Council within the Catchment Liaison Committees.
- 3 Governance oversight of and recommending programmes for delivery of flood protection and drainage maintenance.
- 4 Governance oversight of, and recommending programmes of work related to the Regional Pest Management Plan.
- 5 Governance oversight of and recommending programmes of work that promote sustainable resource management practices.
- 6 Governance oversight of the management of Council's lease land.

Minutes of the Regional Services Committee

Held at Environment Southland, 220 North Road Invercargill
Wednesday 21 February 2024 at 2pm



Present:

Cr Peter McDonald (Chair)
Cr Paul Evans
Cr Lyndal Ludlow
Cr Jon Pemberton
Cr Maurice Rodway
Cr Eric Roy (Deputy)
Cr Phil Morrison
Cr Alistair Gibson
Cr Jeremy McPhail – left at 3.05pm
Chairman Nicol Horrell (ex officio)
Mr Paul Hulse (GM Integrated Catchment Management)
Gail Thompson (mana whenua appointee)
Estelle Leask (mana whenua appointee)
Miss Shanin Bridger (Meeting Secretary)

1 Welcome I Haere mai

The chairperson welcomed everyone to the Regional Services Committee meeting for Wednesday 21 February 2024.

2 Apologies

Noted that Cr Roy and Cr McPhail arrived late to the meeting.

Apologies received from Cr Cook.

Moved by Cr McDonald and seconded by Chairman Horrell, **and resolved:**

That the Regional Services Committee accept the apologies.

Carried

3 Declarations of interest

An interest was declared in item 1 from Chairman Horrell that he is the Chair of the Trust in item 1 – Progress on works and public bodies contracts. Estelle is also a member of the trust.

Moved by Cr Pemberton and seconded by Cr Ludlow, **and resolved:**

That the Regional Services Committee note the declaration of interest.

Carried

4 Public forum, petitions and deputations I He huiuga tuku korero

There were no public forum, petitions or deputations presented at the meeting.

5 Confirmation of minutes

Moved by Cr Rodway and seconded by Cr Pemberton **and resolved:**

That the Regional Services Committee confirms the minutes of the meeting held 18 October 2023 as a true and correct record of that meeting.

6 Notification of extraordinary and urgent business | He panui autaiā hei totoia pakihi

There were no extraordinary items or urgent business tabled for inclusion in the agenda.

7 Questions | Patai

There were no questions asked by the membership.

8 Chairman and councillors reports

There were no reports from the Chairman or councillors

9 Staff reports

9.1 Progress on works and public bodies contracts

To provide councillors with a progress update on works entered into by the catchment operations division during the 1 July to 30 September 2023 period.

Moved Cr Ludlow and seconded Cr Rodway **and resolved:**

That the Regional Services Committee

- 1 Receive the report “progress on works and public bodies contracts”.

Carried

9.2 Catchment operations division update

Mr Randal Beal was in attendance for this item, to provide an update to the committee on the activity within the catchment operations division over the period since the last committee meeting.

Moved Cr Rodway and seconded Gail Thompson **and resolved:**

That the Regional Services Committee

- 1 Receive the report “Catchment operations division update”.

Carried

9.3 Catchment integration division update

The purpose was to update the Regional Services Committee on catchment integration work programmes.

Moved Chairman Horrell and seconded Cr Ludlow **and resolved:**

That the Regional Services Committee

- 1 Receive the report “Operational updates – catchment integration team”.

Carried

9.4 Biosecurity national response changes

The purpose was to provide an update to the Regional Services Committee on changes to regionally important biosecurity programmes that are led by Biosecurity New Zealand.

Moved Cr Rodway and seconded Cr Roy **and resolved:**

That the Regional Services Committee

- 1 Receive the report “biosecurity national response changes”.**
- 2 Note the recommended operational approach.**

Carried

9.5 Biosecurity and biodiversity operation report – quarter two 2023/24

The purpose was for this paper to provide an update to the Regional Services Committee on the operational progress of the biosecurity and biodiversity team’s work programme, focusing on key outcomes and progress towards annual outcomes.

Moved Cr Roy and seconded Cr Pemberton **and resolved:**

That the Regional Services Committee

- 1 Receive the report biosecurity and biodiversity operations division quarterly report.**

Carried

9.6 Catchment Liaison Committee 2024 annual general meetings

The Regional Services Committee were provided background on the purpose of the Catchment Liaison Committee annual general meetings, the role of Environment Southland and key details about the upcoming meetings.

Moved Chairman Horrell and seconded Cr Ludlow **and resolved:**

That the Regional Services Committee

- 1 Receive the report “Catchment Liaison Committee 2024 AGMs”**
- 2 Note the dates and content of the Catchment Liaison Committee AGMs**

Carried

Termination

There being no further business the chairperson closed the meeting at 3.26pm

9.1 Fiordland Marine Guardians Report to Regional Services

Objective ID: A1073423

Report by: Ali Meade - Biosecurity & Biodiversity Operations Manager

Approved by: Paul Hulse – General Manager Integrated Catchment Management



Purpose

To update the regional services committee on the work of the Fiordland Marine Guardians

Summary

The Fiordland Marine Guardians are responsible for managing and caring for Fiordland's marine environment.

The Guardians have been invited to attend the Regional Services Committee on a regular basis to touch on matters that have arisen that may be of interest to the committee.

Recommendation

It is recommended that Regional Services Committee resolve to:

- 1 Receive the report "Fiordland Marine Guardians Report to Regional Services".

Background

The Fiordland Marine Guardians (FMG) were formed in 2005 and are recognised in the Fiordland (Te Moana o Atawhenua) Marine Management Act 2005. Their vision is that the quality of Fiordland's marine environment and fisheries, including the wider fishery experience, be maintained or improved for future generations to use and enjoy.

The Guardians represent the interests of commercial and recreational fishermen, tourism, recreational users, marine science, conservation, and the local community. The interests and responsibilities of Te Rūnanga o Ngāi Tahu are recognised through the appointment of their own representative to the Guardians. Environment Southland works closely with the Guardians on a range of issues from biosecurity, maritime, consents, compliance, science and policy work. Environment Southland staff attend quarterly FMG meetings and are actively involved in several of the FMG sub committees such as the biosecurity, communications and compliance.

The Guardians will speak to and provide an update on activities at the meeting.

Implications/risks

N/A

Next steps

N/A

Views of affected parties

N/A

Fit with strategic framework

OUTCOME	CONTRIBUTES	DETRACTS	NOT APPLICABLE
Managed access to quality natural resources	x		
Diverse opportunities to make a living	x		
Communities empowered and resilient	x		
Communities expressing their diversity	x		

Compliance with Significance and Engagement Policy

N/A

Considerations

Financial implications

N/A

Legal implications

N/A

Attachments

Nil

9.2 Progress on works and public bodies contracts

Objective ID: A1054412

Report by: Randal Beal, Catchment Operations Manager

Approved by: Paul Hulse, General Manager, Integrated Catchment Management



Purpose

To provide councillors with an update progress on works entered into by the catchment operations division during the 1 January to 31 March 2024.

Summary

Murihiku Slow the Flow Update

Murihiku Slow the Flow will pilot a collaborative approach to understanding the feasibility of nature-based climate adaptation solutions (NBS) to reduce the impact on high flood risk areas and move the health of our natural environment toward hauora. The Maitara Slow the Flow Pilot will work with iwi partners, stakeholders, and the community of the Upper Maitara to clarify the problem and identify and test possible NBSs; the learnings which will inform Murihiku Southland's climate adaptation planning and science programmes, and the development of Murihiku's Floodplain Management Approach. The pilot project delivery date is June 2025.

The Murihiku Slow the Flow Pilot Project in the upper Maitara contains four objectives:

- foster a collaborative approach;
- the learnings and outputs from the Upper Maitara Pilot Project will inform future regional climate adaptation planning and decision-making ;
- conduct comprehensive feasibility studies of a range of 'slow the flow' mitigations using hydrodynamic modelling and rigorous assessment against climate change and weather events;
- build a community of learning to explore climate adaptation planning and the opportunities, benefits and barriers associated with chosen mitigations.

Stage two of the project (February 2024 - August 2024) will focus on the development of the data and modelling programme and bringing together partners and stakeholders to collaborate on the pilot project in the Upper Maitara. The project steering group will inform project scope and decide on project boundaries to inform the modelling. The technical team, including internal and external experts, will meet in early May 2024.

This process will also inform the hauora 'nature-based solutions' risk assessment tool that is planned to commence in phase 3, led by Te Ao Mārama.

Gravel Working Group Update

Gravel plays an important role in the health of Southland's Rivers. Gravel management has a part to play in Environment Southland's flood management, and in the region's infrastructure development and maintenance. How and why gravel is managed continues to come under some scrutiny. Environment Southland is in the process of updating its gravel management approach to ensure it better aligns with all regional outcomes.

The gravel working group has met twice resulting in a comprehensive problem definition. The next meeting will facilitate the group to confirm the future state we aim to achieve and possible actions to get there. These will feed into an action plan due to be completed mid-year. Several stakeholder meetings are also planned, with discussions also feeding into the action plan.

Catchment Liaison Committee 2024 Annual General Meetings

Eight AGMs were held in total during March/April 2024, one in each of the rating districts. The meetings provide the opportunity for Environment Southland to have conversations with a core group of stakeholders with the catchment community. The Catchment Liaison Committee Chairs were integral to the development and success of these meetings, and we thank them for their ongoing efforts.

The meetings are a chance to reflect on Environment Southland's previous year's activities and highlight successes and identify gaps, as well as looking ahead to the coming year's work programmes. Efforts were made to showcase activities from across the organisation that help to support Environment Southland's core outcomes. Staff from across the organisation were involved in making these meetings happen, particularly catchment operations, finance, catchment integration, biodiversity/biosecurity, and organisation support.

The proposed Long-Term Plan 2024-34 and Infrastructure Strategy 2024-54 were an additional focus for the meetings and were Environment Southland's first chance to publicly socialise the proposed infrastructure funding and rates review. The meetings were successful in enabling a space for robust conversations and questions. The outcome from several meetings was the request for further staff engagement and community conversations.

Catchment Operations Data & Science Work Programme

Surveying, LiDAR, Bathymetric LiDAR & Aerial Photography:

A large proportion of this year's funding has been allocated to improving the datasets and understanding around the Mataura, Oreti, and Aparima fluvial morphology and fluvial processes using the following techniques: photogrammetry, bathymetric LiDAR, topographic LiDAR, optical LiDAR and traditional river cross-section surveying. This work programme will continue to improve our data, models and science and will play an important role in supporting Environment Southland and advance our strategies to enhance current and future flood risk mitigation and adaptation.

High quality 3-dimensional models of river morphology are vital to support our understanding of flood hazards and fluvial processes. While conventional LiDAR has provided revolutionary perspectives on floodplain form and structure, insights into what's happening below the water surface have been far harder to glean. In recent years, technology is at a point where this is feasible for us to combine with our traditional river surveying methodology.

We are finalising our traditional river cross section surveying across the Mataura, Oreti and Aparima catchments. Additionally, we are finalising projects for the collection of bathymetric LiDAR across the Oreti and Aparima. Validation will be achieved with sonar observations collected from a remote-control jet boat and traditional land and river surveying. This will support future analysis for flood hazard risk analysis and flood mitigation including gravel management. Completion of this work will be done in May – July 2024 when conditions are the most favourable for the specialists and equipment to ensure we get the best results.

Recently we have seen positive results with using this data for analysis of the changes to river aggradation and degradation for the Mataura River in recent public consultation. Further data and analysis in this catchment will enable us to better understand the dynamic processes involved in sediment transport in this system.

The data from the Mataura cross-sections provides some important insights. A map and summary of the cross sections is provided in figure 1 below. Over an 11-year period from 2012-2023, the mean bed level of the section of the Mataura River between Cattle Flat and Riversdale has been relatively stable with an even mix of aggradation and degradation shown in the analysis. In the previous 1-year period the bed has degraded slightly overall showing an average reduction in bed level of 0.07m, although localised areas are also aggrading. As shown in figure 2 below the localised changes in the shape of the bed, and the enlarging of individual gravel island maybe giving the appearance that the bed level is aggrading, however, cross

section surveys are showing minimal change in reality of the mean bed level. We also need to consider future replenishment of reaches below Riversdale that may have received more gravel extraction. This where we need to get to with the whole river to understand gravel resource, movement, and replenishment. Data gathering and analysis will inform future gravel management in this area and inform future planning through the gravel strategy.

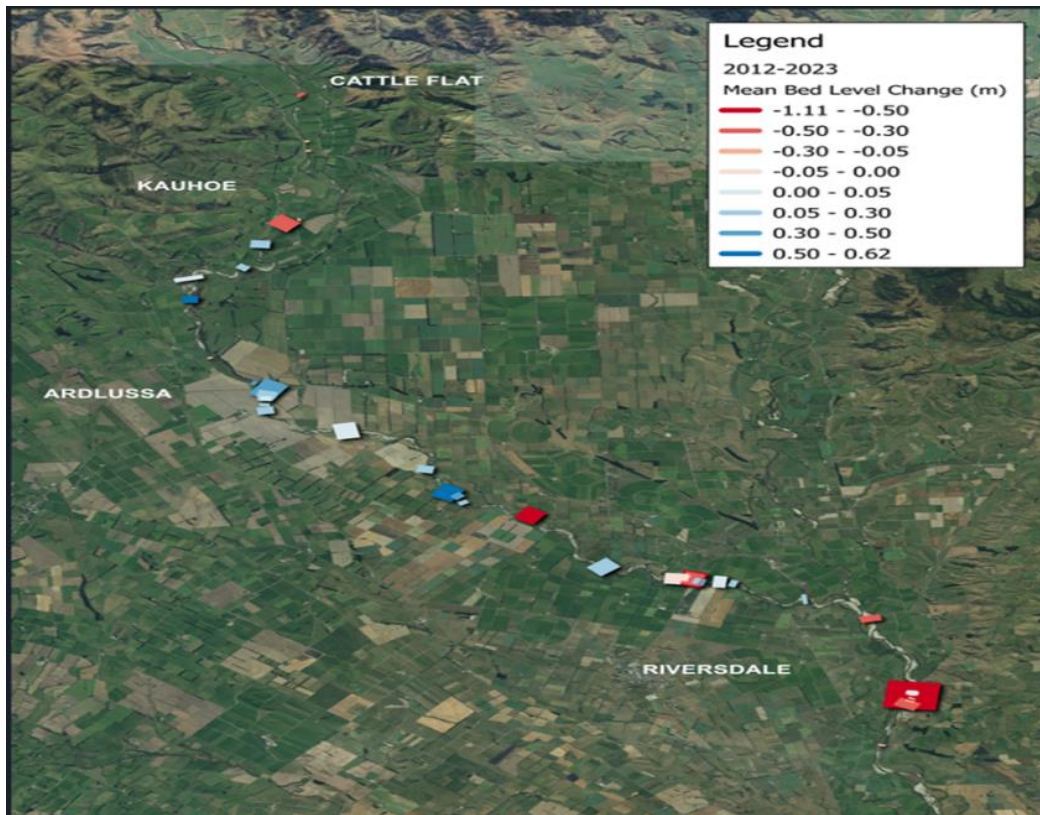


Figure 1: A map and summary of the Matura River cross sections survey.

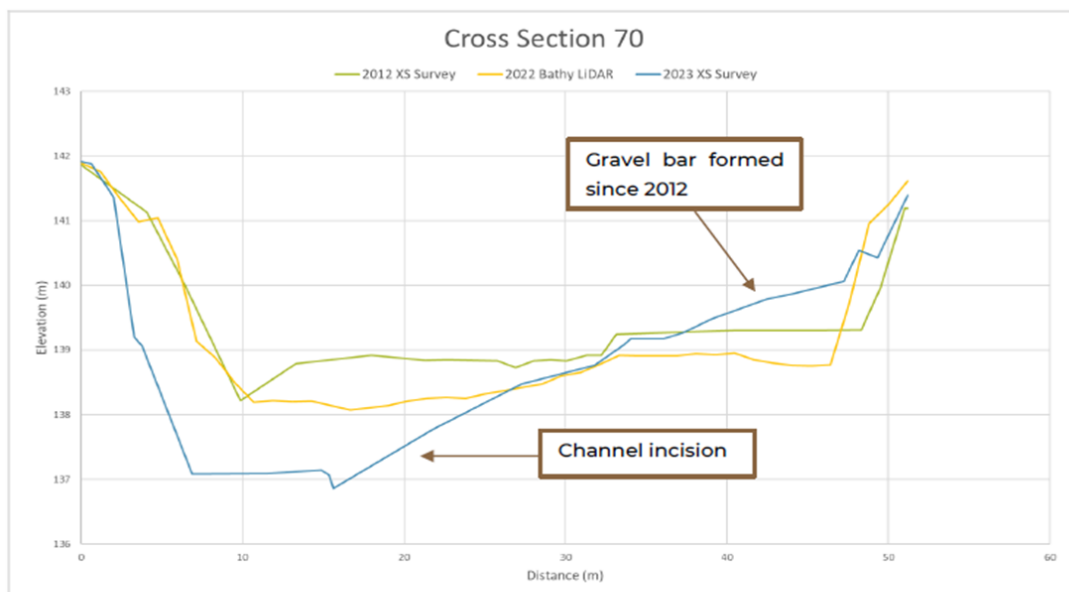


Figure 7: Example of river reach that has overall degraded between 2012 and 2023, despite apparent deposition.

Figure 2: Example of the river reach that has overall degraded between 2012 and 2023, despite apparent deposition.

Oreti River Levels of Service and Options Assessment

Catchment Operations have engaged Land River Sea to undertake Levels of Service and Options Assessment for the Oreti River adjacent to the Winton township, which includes the build of a 2D Hydraulic model. Land River Sea Consulting have been engaged to use the Ōreti River model of this reach to:

- assess the current level of service provided by the Ōreti River stopbanks;
- simulate a range of breach scenarios, overdesign as well as banks down scenarios to develop understanding of the maximum potential flood extents in order to assist with future planning as well as emergency management;
- simulate a range of options designed to give the Ōreti river channel more capacity during flood events. The options include the realignment of stopbanks as well as channel works.

The report will provide options for managing water levels upstream and downstream of the SH96 bridge and identifying pros and cons to each option. Catchment Operations will use these options in considering planning for current and future mitigation.

Mataura Flood Hazard Modelling and Mitigation Level of Service Analysis

The peer review of the 2D Hydraulic model build is being completed. The next steps are to present the peer reviewed model to Council.

Flood Impact & Risk Specialist Team (FIRST)

FIRST Activations and Support:

In April 2024, FIRST activated and supported EMS during the uncertain atmospheric river that impacted the South Island and had localised impacts within our region. The April activation coincided with a FIRST training day and proved to be a great way to test FIRST. The activation highlighted future work required to build capability and capacity internally and with our partners such as MetService, Meridian and EMS.

Work is underway on the FIRST structure and reporting lines during readiness, response and recovery. When the team will be in a position to exercise and train on how they will function during each phase of response and recovery.

Environment Southland Dams Work Programme:

Environment Southland Catchment Operations maintain four dams that are classifiable under the Building Act 2004 and the Building (Dam Safety) Regulations 2022 (the regulations): Winton, Waihopai, Otepuni and the Kingswell dams. We are on track to have the audited and certified PIC to the regional authority by the due date of mid- August this year. Owners of dams with a low PIC have fewer regulatory responsibilities than dams with a medium or high PIC.

Pattle Delamore Partners (PDP) have completed the draft reports for our dam assessments including the potential impact classification (PIC) and geotechnical investigations. This work is now being audited and certified by Engineering Geology Limited who have a recognised engineer.

Of the dams that we own and maintain for our community, the medium and low PIC dams will require a Dam Safety Assurance Programme (DSAP). The DSAP is required to be completed within 12 months for a high PIC dam and within two years for a medium PIC dam. The DSAP includes the following key elements:

- dam and reservoir operation and maintenance;
- surveillance procedures;
- inspection and maintenance of appurtenant structures and inspection, maintenance, and testing of gate and valve systems with dam safety functions;
- intermediate dam safety reviews;
- comprehensive dam safety reviews;
- emergency planning and response;
- identifying and managing dam safety issues.

The final reports for the dams we own and maintain will be supplied in the next report to the committee.

Catchment Operations Maintenance Work Programme

Aparima Catchment:

- ground spray Upper Aparima river;
- stop bank inspection;
- aerial spray programme;
- railway removal Aparima river;
- willow removal Fairfax Aparima River;
- willow removal Pourakino River;
- various bank repairs Aparima river drainage;
- McKays Creek.

Invercargill Catchment

Quarterly Inspections have been completed:

Waihopai Dam

Otepuni Dam

Kingswell Dam

Dam Maintenance

Dam structures were cleared of vegetation/weeds and mowed where needed as part of our ongoing maintenance plan.

Tree Removal

The large bluegums below North Road along the true right bank were removed. The stumps and roots were also removed with repairs made and the bank re-grassed.

Several tree stumps were ground down with a stump grinder around the Waihopai, Otepuni and Kingswell areas where trees were removed late in 2023. The trees were away from the stop bank infrastructure. This work was carried out as part of our defect programme to remove vegetation from assets.

Invercargill City Council - Tree Removal

The Invercargill City Council has started removing trees and gardens along the Otepuni stop banks between Rockdale Road and Lindisfarne Street as part of our agreement to remove vegetation from stop banks.

The stumps will be removed and repairs carried out to the stop banks in the summertime by Environment Southland.

Channel Maintenance

The Kingswell Creek and Otepuni Stream have been sprayed as part of our ongoing maintenance programme.

The edges of the Waihopai channel above Queens Drive to the Waihopai Dam have been removed as part of our channel maintenance programme.

Mowing

Mowing of the Waihopai, Otepuni, Kingswell and Clifden stop banks, flood fairways and walkways have been carried out as required.

Phil Bevan has been carrying out the mowing requirements around track entrances and bridges.

Walkway - Garden Maintenance

Spraying of Waihopai, Otepunu, Kingswell and Clifden walkways where needed has been carried out. Gardens have been maintained through weed eating and spraying in line with our ongoing maintenance programme.

Dog waste bins have been emptied once a fortnight as required.

Culverts and Flap gates

Maintenance of our flap gates along with weed eating and spraying around flap gates has been carried out as part of our ongoing maintenance plan.

Fencing

The fences along the Waihopai stop bank between North Road and Drury Lane were replaced where needed, after the removal of trees and stumps.

Stabicraft Easement, Walkway and Contract

The walkway has been surveyed by True South Surveyors; the easement has been lodged for the walkway situated on JH Properties Ltd land.

The contract between Environment Southland and JH Properties Ltd has been finalised and signed by both parties.



New walkway construction behind Stabicraft



New walkway and security fences behind Stabicraft

Mataura Catchment

Rock Work

Otama	96 Tonne
Mandeville	160 Tonne over 2 sites
Athol	1521 Tonne over 5 sites
Gore	759 Tonne
Cattle Flat	100 Tonne

Channel Maintenance – Willow Control & Debris Removal

Mataura River	Otama
Mataura River	Wyndham
Waikaka Stream	Gore
Waikaia River	Steeple Burn

Quarterly Inspections Gore Mataura & Wyndham Town Stopbanks

Monthly

Night shooting pests Gore Mataura & Wyndham Town Stopbanks

Fairway Spraying

Helicopter fairway spraying throughout catchment
Ground spraying Mataura and Gore Town flood fairway

Land Drainage Work (machine)

Clear Creek	Yearly maintenance
Ives Creek	Yearly maintenance.
Waimumu Stream	Yearly maintenance, 223 tonnes of rock has been placed around existing drop Structures
Upper Waimea	Three yearly maintenance

Longridge Stream	Fallen trees removed from the channel on Blair Drysdales
Parawa Stream	Three yearly maintenance

Land Drainage Work (spraying)

Old Waimumu	Yearly maintenance
Charlton Drain	Yearly maintenance
Rippon Drain	Yearly maintenance
Cronins Creek	Yearly maintenance
Arthurton Drain	Yearly maintenance
Pyramid Block Drain	Yearly maintenance

General Catchment Work

Makarewa:

- Cleared willows over 850m of channel downstream of the SH6 bridge – 19 working days;
- removed willows over 1,100m of channel, repaired erosion and low spot in flood bank Otapiri Stream upstream of Tanner Road approx. 15 working days - approximately 800 tonnes of rock used to repair erosion;
- repaired erosion at two properties on Lora Stream - 900 tonne rock;
- removed fallen willows Otapiri Gorge area – two working days.

Oreti:

- Cleared willows over 350m of channel upstream Ellis Road bridge Irthing Stream – 17 working days;
- installed 70m of rock for edge protection mid Oreti River – 410 tonnes of rock;
- installed 50m of heavy willow edge protection at site on mid Oreti River;
- cleared 100m of willows upstream of SH99 bridge Oreti River to increase channel capacity;
- repaired two 600mm dia floodgates Oreti River on culverts through flood banks;
- replaced 400mm dia floodgate on culvert through Oreti River flood bank;
- repaired 600mm dia woodstave culvert through Oreti River flood bank;
- removed and repaired two 2300mm dia floodgates on structure at Allison Road, Taramoa area, Lower Oreti River;
- cleared 1,250m of gorse and broom from the Oreti River flood bank and repaired stock damage at three locations;
- aerial sprayed 400 ha of Oreti flood fairway.

Waiau:

- Aerial spray 150 ha gorse, broom and willow Waiau and Wairaki flood fairways;
- 1.5km new nine wire fence at Howdens;
- repaired Tuatapere flood bank over 530m.

Te Anau:

- Sprayed 107ha gorse, broom and willow Mararoa River flood fairway;
- carried out erosion repairs Mararoa River 800 tonnes of rock;
- remove 1500m³ overburden Upukerora River to fill in hollows around cycle track;
- cleared willows off Whitestone River flood banks over 1200m;
- removed 24 defects along 9km of stopbank (State highway to Hillside Road);
- erosion/rock work repairs Upukerora near Plant – 300t rock;
- carted 400 tonne rock to repair Boundary Block drain erosion;
- remove vegetation and clean 1,750m Home Creek tributary;
- removed 5000m³ overburden and 900m³ of gravel from Mararoa Bridge.

Progress on Gallagher Road - Oreti River

A joint project between Environment Southland, Southland District Council and the private landowner to address flooding of Gallagher Road is progressing.

A plan has been designed by catchment operations staff and a consent application lodged by Environment Southland planning consultants SLWP. At the time of writing this report written approvals have been received from Fish and Game and Te Ao Mārama Inc. Approval is expected from LINZ but the Department of Conservation have requested a site visit which has been organised for the 24 April 2024, prior to providing written approval.

Progress on Wallacetown Willow Removal

Work to remove the heavy crack willow growth opposite the riverbank erosion on Largs Street, Wallacetown commenced in February 2024. Catchment Operations staff and council contractors were trying to time the work with low flows in the Makarewa as there is limited access along the riverbanks for excavators and the best option was to operate from in the bed of the river and drag the trees down to where they could be pulled out at a spot on the left bank and disposed of by burning.

Approximately 170m of the 440m of trees on the true left bank have been removed opposite the erosion which should help ease the pressure on the worst section of damage along Largs Street.

Unfortunately, the river proved to be too deep for the digger to get to the top end of the willows needing to be removed and alternate solutions are being assessed such as towing the trees down to the disposal area or across to the Largs Street side if access is suitable and agreeable with the property owners across whose land the machinery needs to travel. Weather conditions and river levels have meant this work has been unavoidably delayed and ground conditions on the site where the trees were being disposed are now too wet so it is proposed to look at continuing the work the coming summer if access can be agreed to with the landowners on the true right bank.

If an alternative methodology for removing the willows isn't achievable the work will be carried over to next summer.

Report on Annual Vegetation Control Program

Apart from a small amount of aerial spraying on the Lower Waiau River, the programmes on the other rivers have been completed. Weather conditions have been challenging for the contractors at times but they managed to complete the program by the end of the contract period.

LINZ have contributed \$100K to the programme again this season under an arrangement where Environment Southland contractors carry out the work on LINZ riverbed in sections of the rivers that LINZ previously kept under control. Additional funding has allowed catchment operations staff to target problem areas at locations such as Eyre Creek, Dome Burn and the Hamilton Burn above the rating district boundaries. It has also allowed some spraying to be carried out in the Te Anau Basin where the rating district funding has been restricted to 50% of the Department of Conservation's (DOC) contribution at the request of the Te Anau River Liaison Committee who are adamant that DOC needs to be contributing more to the work on the Basin's rivers. Property ownership of the Basin riverbeds is either marginal strip (DOC) or hydro (LINZ) which is a situation that differs from other rivers in Southland.

Report on Branxholme River Crossing Trial

The trial was undertaken on the 15 February 2024 above the Branxholme rail bridge. An unloaded Moxie truck made 22 passes across the river from Ryal Bush Transport's yard on the true left bank to a point diagonally upstream on the true right bank.

The ecologist's report hasn't been received yet but indications from staff and Ryal Bush Contracting's management who were present at the trial, are that the river cleared after a few passes and apart from

some ongoing discoloration at the water's edge where the vehicle was entering and exiting, there wasn't much of plume visible for any significant distance downstream.

The data from the trial will be used to support a consent application for gravel extraction.

Climate Resilience Projects

Gore stop Bank Tree and Stump Removal

Trees on the Gore township stop banks along River and Richmond Streets were removed in April 2023, the removal of the stumps was delayed until the 23/24 summer construction season.

The tree stump removal and stop bank repairs have been carried out to the stop banks including re-grassing. The project went well with specialised equipment utilised to remove the stumps.

Because of the specialised equipment used, no damage was caused to the curbing along River Street which resulted in the project being delivered under the approved budget.



Stump borer in action



Results from stump borer and pick, before tree roots removed



Finished result after repair work carried out along River Street at Gore



Finished result after stumps removed and repairs made to Stop Bank at Richmond Street Gore

Ontario Street Stopbank

Construction of the new Ontario Street stopbank in East Gore is now complete.



Ontario street bank completed



The completion of the Ontario Street stop bank and the completion of the tree stump removal brings the Gore Climate Resilience project to an end. Staff are now working on the closure report.

Mataura

Final remedial and reinstatement works were completed in January 2024 on the Waimumu Stream stop bank. This in addition to the upgraded Boundary Creek stopbank bring the Mataura Climate Resilience works to a close. Staff are now working on the closure report.

Wyndham

The final portion of the stopbank upgrade is nearing completion at Wyndham. Practical completion is expected to be achieved mid-late April 2024 weather permitting.





Waihopai

Works are expected to be complete during mid-April weather permitting for the Waihopai stopbank upgrade. Once practical completion is achieved, the upgraded stop bank will be opened for public use.

Stead St Pump Station

Remedial works relating to the design level error were completed in early January 2024. Works are now continuing as planned, with the two Archimedes screw pumps having been transported to site and installed. The manufacturers of the pumps have undertaken a site visit and have confirmed that they have accepted alignment of the pumps installation. It is expected that the commissioning of the pumps will start late June/ early July 2024.

The decommissioning of the existing pump station will be delayed for a period of time to allow for back up pumping capacity should it be needed.



Stead Street pumps installed

Recommendation

It is recommended that the Regional Services Committee resolves to:

1. Receive the report “progress on works and public bodies contracts”.

Implications/risks

There are no implications or risks directly associated with this report.

Fit with strategic framework

OUTCOME	CONTRIBUTES	DETRACTS	NOT APPLICABLE
Managed access to quality natural resources	x		
Diverse opportunities to make a living	x		
Communities empowered and resilient	x		
Communities expressing their diversity	x		

Compliance with Significance and Engagement Policy

There are no issues within this report which trigger matters in this policy.

Attachments

Public bodies contracts 1 January to 31 March 2024 (A1071080)

Public Bodies Contracts - 1 January to 31 March 2024

Aparima LD Reporting			
1/02/2024	Machine Cleaning Castle Downs Drains C28371	Thwaites Contracting Ltd	14,768
16/02/2024	Cleaning McKays Creek and stream C28399	Central Southland Excavating	7,394
04/03/2024	Consent Applic Deposit	Southland Regional Council	3,210
25/03/2024	Ground Spraying McKay Trib	Weathertight Roofing Ltd t/a Phil Bevin Spraying	943
31/03/2024	TF Truck Hire Exp From W1296 to W1280	Land Drainage Expenditure : Aparima Rating District : Channel Maintenance	675
Total			26,989
Makarewa LD			
20/02/2024	Trim & Spray Channel Road Forestry Block C27578	Forest Management Ltd	6,164
Total			6,164
Mataura LD			
1/01/2024	Monitoring Costs for AUTH-20169518	Southland Regional Council	38
1/01/2024	Waimumu Stream cleaning C28220	K2 Kontracting	2,000
30/01/2024	Spraying - Clear and Ives drain system C27187	Weathertight Roofing Ltd t/a Phil Bevin Spraying	1,233
31/01/2024	Cleaning Ives Creek 52.5hrs C28219	Thwaites Contracting Ltd	8,663
31/01/2024	Cleaning Lower Oteramika and Clear Creek C28219	Thwaites Contracting Ltd	13,118
31/01/2024	Waimumu Stream Cart & Supply Rock C28220	K2 Kontracting	17,589
1/02/2024	Upper Waimea Channel Maintenance C28244	Gunther Excavating Ltd	25,740
29/02/2024	Titiroa Flood Gates: Project Management 20/2/24	Land River Sea Consulting	210
1/03/2024	Longridge Stream clearing gravel C28233	K2 Kontracting	1,040
21/03/2024	Sorted Rock	Hillside Metals Co Ltd	1,018
31/03/2024	Cut & Tie Willows Waimumu Stream C28220	K2 Kontracting	5,825
Total			76,472
Oreti LD			
31/01/2024	Hire Digger at Coppus to rock C28621	Stirling Contracting	9,320
01/02/2024	Supply Boulders C28623	Rabco Ag Ltd	2,880
01/02/2024	Re-imburse rock to armour banks from July 23 FI	JJ & AM Coppus	8,054
21/02/2024	Cart Rock ex Prices Pit to Substation Rd C28639	Drainage & Excavation Services Ltd	2,205
29/02/2024	Machine assist free felling on Andersons C28644	Drainage & Excavation Services Ltd	2,773
01/03/2024	Removing Willows Dipton Stream C28644	Drainage & Excavation Services Ltd	4,523
04/03/2024	Spraying Swales Creek	Weathertight Roofing Ltd t/a Phil Bevin Spraying	50
04/03/2024	Spraying Gaines Cull	Weathertight Roofing Ltd t/a Phil Bevin Spraying	508
04/03/2024	Spraying Winton Creek	Weathertight Roofing Ltd t/a Phil Bevin Spraying	600
04/03/2024	Spraying East Winton	Weathertight Roofing Ltd t/a Phil Bevin Spraying	1,015
04/03/2024	Spraying Lochiel	Weathertight Roofing Ltd t/a Phil Bevin Spraying	1,813
25/03/2024	Spraying Otakau drain system	Weathertight Roofing Ltd t/a Phil Bevin Spraying	2,175
31/03/2024	To Hire Digger Waihopai remove trees C29156	Stirling Contracting	4,260
Total			40,174
Wairaki Stream LD			
23/01/2024	Wairaki Ground Spraying	Weathertight Roofing Ltd t/a Phil Bevin Spraying	1,700.00
31/03/2024	Wairaki Aerial Spray C27594	Southland Helicopters Ltd	6,557.50
Total			8,258
Lilburn Stream LD			
14/01/2024	Labour A Swann remove trees	A K Swann Southern Contracting Ltd	1,944
11/03/2024	Lill Burn Spray	Weathertight Roofing Ltd t/a Phil Bevin Spraying	2,465
Total			4,409
Lake Hawkins LD			
23/01/2024	Supply Earmuffs & Gloves C28386	NZ Safety Ltd	112
25/01/2024	Repair Rake C28387	JK's Engineering	82
26/01/2024	Stead Street Pump Fault - Call Out	NES	507
01/02/2024	Cleaning weed in front of pump station C28385	Thwaites Contracting Ltd	1,520
01/02/2024	Daily Servicing Stead St Pump Station C28384	Allan Savage Contracting	3,195
01/02/2024	Cleaning Lake Hawkins 79.5hrs C28385	Thwaites Contracting Ltd	13,118
01/02/2024	Cleaning Lake Hawkins 88.5hrs C28385	Thwaites Contracting Ltd	14,603
12/02/2024	DD150224 Pump Stn electricity to 26/01/24	Contact Energy Ltd	1,407
29/02/2024	Daily Servicing Stead St Pump Station C28384	Allan Savage Contracting	1,450
01/03/2024	Hire 20 ton excavator C28385	Thwaites Contracting Ltd	2,640
13/03/2024	DD190324 Pump Stn electricity to 27/2/24	Contact Energy Ltd	3,501
14/03/2024	Supply Culvert Pipe 500mm 5.8M SN4 Eurofilo C28910	Humes Pipeline	640
18/03/2024	Deliver Culvert 2hrs 84Km	Weathertight Roofing Ltd t/a Phil Bevin Spraying	184
18/03/2024	Spray Lake Hawkins Drain System 13Hrs	Weathertight Roofing Ltd t/a Phil Bevin Spraying	1,885
Total			44,843
Waituna LD			
01/01/2024	Supply fencing materials C28381	Great Southern Invercargill	18
25/01/2024	Rock Job & Transport 20T Digger C28388	Central Southland Excavating	2,521
16/02/2024	Hire Silage Trailers/Tractors 16.2.24	PDL Farms Limited	386
29/02/2024	Rebattering Waituna Stream C28904	Thwaites Contracting Ltd	6,353
29/02/2024	Cleaning Waituna C28904	Thwaites Contracting Ltd	9,323
01/03/2024	Supply VNZ Ryegrass A	Advance Agriculture Ltd	200
01/03/2024	Supply Diploid Ryegrass A	Advance Agriculture Ltd	200
01/01/2024	Cleaning out drain & fish recovery C28365	Central Southland Excavating	5,564
21/02/2024	Cart Rock to Lower Waituna Stream 21-23 Feb 24	Healy Trucking	10,648
28/02/2024	Cart Rock to Upper Waituna Stream 28-29 Feb 24	Healy Trucking	14,080
29/02/2024	Rebattering Waituna Stream (Lower) Luke C28904	Thwaites Contracting Ltd	5,363
29/02/2024	Rebattering Waituna Upper Stream Luke C28904	Thwaites Contracting Ltd	6,353
29/02/2024	Rebattering Waituna stream Upper C28904	Thwaites Contracting Ltd	8,828
29/02/2024	Rebattering Waituna Stream Lower C28904	Thwaites Contracting Ltd	8,833
29/02/2024	Rebattering Waituna Stream Barry & Dozer C28904	Thwaites Contracting Ltd	11,763
29/02/2024	ReBattering Waituna Lower Stream Barry & Dozer	Thwaites Contracting Ltd	12,310
29/02/2024	Supply Rip Rap ex The Quarry	J Crooks & Sons Ltd	13,488
04/03/2024	Regrassing Banks Waituna 11Hrs 171KM	Weathertight Roofing Ltd t/a Phil Bevin Spraying	721
08/03/2024	Hire Silage Trailers/Tractors	PDL Farms Limited	1,800
31/01/2024	C Young catchment Mgt support 29.5hrs Jan 24	Colin Young	196
01/02/2024	Supply Trimming Knife C28393	Goldpine Industries Ltd	12
01/02/2024	Supply fencing materials C28393	Goldpine Industries Ltd	185
01/02/2024	Supply materials C28392	NZ Safety Ltd	510
01/02/2024	Opening Waituna Lagoon & Transporting 51hrsC28397	Thwaites Contracting Ltd	2,619

01/02/2024	Bulldozing - Opening of Waituna Lagoon 30.1.24	Graeme Shearing Earthmoving	8,188
Total			130,456
Waimatuku LD			
01/01/2024	Machine Clean Upper Waimatuku C28369	Gunther Excavating Ltd	8,025
30/01/2024	Drain Spraying Otaitai Bush 2.5Hrs	Weathertight Roofing Ltd t/a Phil Bevin Spraying	363
19/02/2024	Transport 20T Digger to Templeton Rd	Central Southland Excavating	1,723
20/02/2024	Transport 20T Digger to Isla Bank	Central Southland Excavating	1,103
04/03/2024	Blown Over Trees Waimatuku Stream	Weathertight Roofing Ltd t/a Phil Bevin Spraying	292
Total			11,506
Aparima RW			
29/02/2024	Spray Aparima River Floodway Vegetarian Control	Heliops Southland Ltd	5,060
01/01/2024	Transport Thwaites Digger Dipton Mossburn Rd to Fairfax	Doug Symons Contracting Ltd	951
01/01/2024	Fabricate & fit new steel bank on Floodgate C2836	Engineering Sheetmetal & Marine Ltd	1,829
01/01/2024	Aparima River Briefing Inspection Flight 19.2.23	Heliops Southland Ltd	3,080
01/02/2024	Remove Railway irons From River C28395	Thwaites Contracting Ltd	578
01/02/2024	remove railway iron Aparima R C28395	Thwaites Contracting Ltd	660
01/02/2024	Fairfax - remove trees from river C28396	Thwaites Contracting Ltd	908
01/02/2024	Cart Rock to Yellowbluff area	Healy Trucking	8,378
06/02/2024	Ground Spraying Aparima River 8.5Hrs	Weathertight Roofing Ltd t/a Phil Bevin Spraying	1,233
13/02/2024	Ground Spraying Opio Stream Baird property	Weathertight Roofing Ltd t/a Phil Bevin Spraying	300
21/02/2024	Ground Spraying Otatau Tree Removal	Weathertight Roofing Ltd t/a Phil Bevin Spraying	724
18/03/2024	Fence repairs	Weathertight Roofing Ltd t/a Phil Bevin Spraying	97
18/03/2024	Fence repairs & Clearing trees	Weathertight Roofing Ltd t/a Phil Bevin Spraying	412
01/02/2024	Supply rock C28388	Rabco Ag Ltd	3,288
21/02/2024	Aerial Spraying Programme Contacts C27432	WSP New Zealand Limited	804
05/03/2024	Consent application for Gowan Hill Aparima River	Southern Land and Water Planning Limited	4,375
Total			32,676
Invercargill RW			
11/01/2024	DD170124 Howorth St electricity to 27/12/23	Contact Energy Ltd	64
15/01/2024	Ground Spraying Invercargill C27187	Weathertight Roofing Ltd t/a Phil Bevin Spraying	573
15/01/2024	Ground Spraying Kingswell C27187	Weathertight Roofing Ltd t/a Phil Bevin Spraying	1,015
15/01/2024	Ground Spraying Invercargill C27187	Weathertight Roofing Ltd t/a Phil Bevin Spraying	475
15/01/2024	Ground Spraying Waihopai C27187	Weathertight Roofing Ltd t/a Phil Bevin Spraying	1,028
16/01/2024	S Kelly- Various Ingill Works 6.5hrs 40km C27186	Stephen G Kelly	260
23/01/2024	Waihopai & Clifden spraying & Maintenance C27187	Weathertight Roofing Ltd t/a Phil Bevin Spraying	382
23/01/2024	Waihopai & Clifden spraying & Maintenance C27187	Weathertight Roofing Ltd t/a Phil Bevin Spraying	1,769
25/01/2024	Waihopai Debris Trap Investigations	Pattle Delamore Partners Ltd	3,745
30/01/2024	Remove fence Waihopai Stopbank C27187	Weathertight Roofing Ltd t/a Phil Bevin Spraying	294
30/01/2024	Clifden Stopbank Weed control C27187	Weathertight Roofing Ltd t/a Phil Bevin Spraying	700
30/01/2024	S Kelly- Various Ingill Works 6km 40hrs C27186	Stephen G Kelly	242
31/01/2024	Supply fencing materials C28227	Great Southern Invercargill	204
31/01/2024	C Young catchment Mgt support 29.5hrs Jan 24	Colin Young	978
31/01/2024	Digger Hire Mulch along Floodbank C28226	Ryal Bush Transport Ltd	4,747
31/01/2024	Bin Hire 29A Howorth St C27190	Trojan Holdings Ltd	13
06/02/2024	Otepunu and Waihopai spraying/repairing C27187	Weathertight Roofing Ltd t/a Phil Bevin Spraying	838
12/02/2024	DD170224 Howorth St electricity to 26/1/24	Contact Energy Ltd	64
13/02/2024	Ground Spraying & Maintenance Waihopai C27187	Weathertight Roofing Ltd t/a Phil Bevin Spraying	200
13/02/2024	Ground Spraying & Maintenance Waihopai C27187	Weathertight Roofing Ltd t/a Phil Bevin Spraying	1,211
19/02/2024	S Kelly- Various Ingill Works 6hrs 40km C27186	Stephen G Kelly	242
27/02/2024	Supply Duraveg Verm Mix C28230	PGG Wrightson Seeds Ltd	293
27/02/2024	Scrub Bar Clifden & Fence Removal Waihopai C27187	Weathertight Roofing Ltd t/a Phil Bevin Spraying	708
27/02/2024	Scrub Bar Clifden & Fence Removal Waihopai C27187	Weathertight Roofing Ltd t/a Phil Bevin Spraying	1,169
29/02/2024	Waihopai Stream Clearing and carting slash C28228	Drainage & Excavation Services Ltd	17,909
29/02/2024	Bin Hire 29A Howarth St C27190	Trojan Holdings Ltd	13
01/03/2024	Stumpgrinding C28229	Southern Mulching & AG Services Limited	425
01/03/2024	Stumpgrinding C28229	Southern Mulching & AG Services Limited	638
01/03/2024	Stumpgrinding C28229	Southern Mulching & AG Services Limited	1,275
11/03/2024	Regrass Banks Dam C27187	Weathertight Roofing Ltd t/a Phil Bevin Spraying	637
11/03/2024	Regrass Banks Scrub Bar Dam Ingill 34Hrs C27187	Weathertight Roofing Ltd t/a Phil Bevin Spraying	377
12/03/2024	S Kelly- Various Ingill Works 6Hrs 40Km C27186	Stephen G Kelly	242
13/03/2024	DD180324 Howorth St electricity to 27/2/24	Contact Energy Ltd	69
18/03/2024	Invercargill Maintenance & Inspections C27187	Weathertight Roofing Ltd t/a Phil Bevin Spraying	200
18/03/2024	Invercargill Maintenance & Inspections C27187	Weathertight Roofing Ltd t/a Phil Bevin Spraying	465
18/03/2024	Invercargill Maintenance & Inspections C27187	Weathertight Roofing Ltd t/a Phil Bevin Spraying	975
19/03/2024	Fencing Repairs C28238	Lyell Crawford Penno	4,394
21/03/2024	Supply fencing materials C28241	Great Southern Invercargill	461
21/03/2024	Supply Netting C28242	Farmlands Co-operative Society Ltd	1,030
22/03/2024	Mowing stopbanks C27197	Cleanways 2003 Ltd	19,995
25/03/2024	Spray unit fence lines drains Waihopai C27187	Weathertight Roofing Ltd t/a Phil Bevin Spraying	600
25/03/2024	Invercargill Maintenance scrub bar use C27187	Weathertight Roofing Ltd t/a Phil Bevin Spraying	432
27/03/2024	Otepunu Kingswell Winton Dam Assessments	Pattle Delamore Partners Ltd	4,153
27/03/2024	Otepunu Kingswell Winton Dam Assessments	Pattle Delamore Partners Ltd	4,943
27/03/2024	Otepunu Kingswell Winton Dam Assessments	Pattle Delamore Partners Ltd	5,839
27/03/2024	Otepunu Kingswell Winton Dam Assessments	Pattle Delamore Partners Ltd	6,369
27/03/2024	Supply Netting C28242	Farmlands Co-operative Society Ltd	687
28/03/2024	Otepunu Kingswell Winton Dam Assessments	Pattle Delamore Partners Ltd	5,998
28/03/2024	Otepunu Kingswell Winton Dam Assessments	Pattle Delamore Partners Ltd	6,113
28/03/2024	S Kelly- Various Ingill Works 6hrs 40km C27186	Stephen G Kelly	242
28/03/2024	Sweep Walking Tracks Stabicraft to Kekeno C28222	Supreme Excavation & Site Works Ltd	1,350
28/03/2024	Clear back woody vegetarian along track C28231	Asplundh Tree Expert (NZ) Ltd	6,244
Total			113,286
Makarewa RW			
31/01/2024	Clearing willows and edge protection C27572	Drainage & Excavation Services Ltd	1,488
08/02/2024	Supply Stormwater Pipe SN2 Solid Wall C28626	P & F Global Ltd	729
01/01/2024	Pull out railway irons C28383	Central Southland Excavating	1,329
14/01/2024	Labour willow removal	A K Swann Southern Contracting Ltd	546
28/01/2024	Gas cylinder rental	BOC Gases NZ Ltd	66
30/01/2024	Review of Ground Spraying Programme Agreement	Wynn Williams & Co	137
12/02/2024	Supply labour Makarewa willow removal	A K Swann Southern Contracting Ltd	2,994
20/02/2024	Supply fencing materials C28305	Goldpine Industries Ltd	648
22/02/2024	Supply fencing materials C28305	Goldpine Industries Ltd	110

26/02/2024	Gas cylinder rental	BOC Gases NZ Ltd	61
26/02/2024	Labour willow removal	A K Swann Southern Contracting Ltd	7,462
29/02/2024	Remove Makarewa Willows C27572	Drainage & Excavation Services Ltd	25,775
11/03/2024	Labour willow removal	A K Swann Southern Contracting Ltd	5,882
22/03/2024	Rock Supply 1660 tonnes March 24	Geoffrey Mervyn Jukes	26,560
25/03/2024	Rock Cartage Otapiri and Lora C27572	Drainage & Excavation Services Ltd	15,030
Total			88,817

Mataura RW

01/01/2024	Cleaning and replace cattle stop C27546	K2 Kontracting	2,278
01/01/2024	Rock job Dillon Rd C27872	K2 Kontracting	3,263
23/01/2024	Fairway Spraying Waikaia River C27858	Southland Helicopters Ltd	9,456
30/01/2024	Night Shootings Gore C27547	D M Holdings	250
30/01/2024	Night Shootings Mataura C27547	D M Holdings	250
30/01/2024	Night Shootings Wyndham C27547	D M Holdings	250
31/01/2024	Rock Job Mandeville C27881	NC & GT Johnston	87
31/01/2024	Rock JobMandeville C27882	K2 Kontracting	192
31/01/2024	Rock Job Mandeville C27885	K2 Kontracting	288
31/01/2024	Rock Job completion of rock C27871	NC & GT Johnston	305
31/01/2024	Rock Job Jcompletion of rock C27872	K2 Kontracting	338
31/01/2024	Rock Job- Mandeville C27884	NC & GT Johnston	348
31/01/2024	Rock Job Mandeville C27883	Fisken Contracting Ltd	365
31/01/2024	Rock Job - Sanson Rd C27890	NC & GT Johnston	368
31/01/2024	Rock Job - Ardlussa C27893	NC & GT Johnston	485
31/01/2024	Maintenance Cattle Flat & Keown Property C27531	K2 Kontracting	536
31/01/2024	Rock Job Mandeville C27886	Fisken Contracting Ltd	628
31/01/2024	Rock Job completion of rock C27873	Fisken Contracting Ltd	645
31/01/2024	Rock Job Wyndham C28751	Fisken Contracting Ltd	757
31/01/2024	Rock Job- Croydon C27878	NC & GT Johnston	872
31/01/2024	Rock Job Croydon C27879	K2 Kontracting	965
31/01/2024	Rock Job Sanson Rd C27892	Fisken Contracting Ltd	978
31/01/2024	Rock Job Matuara R C27887	NC & GT Johnston	1,134
31/01/2024	Rock JobArdlussa C27895	Fisken Contracting Ltd	1,195
31/01/2024	Rock Job - Gorge Rd C27896	NC & GT Johnston	1,218
31/01/2024	Rock Job Gorge Rd C27897	Fisken Contracting Ltd	1,346
31/01/2024	Willow Removal & Debris Dillon Rd Otama C27529	Fisken Contracting Ltd	1,422
31/01/2024	Rock Job Croydon C27880	Fisken Contracting Ltd	1,682
31/01/2024	Rock Job Mataura C27889	Fisken Contracting Ltd	2,721
31/01/2024	Rock Job stopbank Waikaia C27876	K2 Kontracting	5,098
31/01/2024	Fairway Spraying Cattle Flat C27858	Southland Helicopters Ltd	9,016
31/01/2024	Fairway Spraying Otamita Bridge - Gore C27858	Southland Helicopters Ltd	10,424
31/01/2024	Mowing Mataura Town Stopbanks and Gore C27533	K2 Kontracting	8,759
31/01/2024	C Young catchment Mgt support 29.5hrs Jan 24	Colin Young	660
31/01/2024	Machine assist tree removal/ digging stumpsC28228	Drainage & Excavation Services Ltd	6,680
01/02/2024	Gate installed Otario Stopbank C27851	Linton Contracting Ltd	1,858
01/02/2024	Cart Rock Left & Right Side 30.1.24 C27546	K2 Kontracting	3,543
01/02/2024	Supply Rock ES Stopbank C28759	Hillside Metals Co Ltd	7,589
05/02/2024	Supply Rock Wyndham C28758	Hillside Metals Co Ltd	3,238
06/02/2024	Rock Job Wyndham C27900	NC & GT Johnston	678
20/02/2024	Fairway Spraying to Nokomai C27858	Southland Helicopters Ltd	8,944
21/02/2024	Supply Rock C28755	Fulton Hogan	1,053
21/02/2024	Rock Job Supply last of rock C28755	Fulton Hogan	1,872
21/02/2024	Supply Rock C28755	Fulton Hogan	2,067
21/02/2024	Supply Rock C28755	Fulton Hogan	4,368
21/02/2024	Fairway Spraying Eyre Creek LINZ C27858	Southland Helicopters Ltd	1,344
23/02/2024	Supply Rock C28757	Fulton Hogan	2,496
23/02/2024	Supply Rock C28757	Fulton Hogan	3,120
23/02/2024	Supply Rock ES Stopbank C28757	Fulton Hogan	4,934
23/02/2024	Supply Rock C28757	Fulton Hogan	7,488
28/02/2024	Night Shootings Gore C27547	D M Holdings	250
28/02/2024	Night Shootings Mataura C27547	D M Holdings	250
28/02/2024	Night Shootings Wyndham C27547	D M Holdings	250
29/02/2024	Mataura Rock Protection Feb 24	Southern Land and Water Planning Limited	175
29/02/2024	Rock Job Sanson Rd C27891	K2 Kontracting	408
29/02/2024	Rock Job Ardlussa C27894	K2 Kontracting	523
29/02/2024	Willow Removal & Burn Wyndham C27531	K2 Kontracting	690
29/02/2024	Rock job at C27888	K2 Kontracting	1,255
29/02/2024	Cart rock to River Terrace Gore C28753	NC & GT Johnston	1,260
29/02/2024	Rock Job at Wyndham C28752	K2 Kontracting	3,268
29/02/2024	Rock job Gorge Rd C27898	K2 Kontracting	4,553
29/02/2024	Rock Job River Terrace Gore C28761	K2 Kontracting	13,116
29/02/2024	Spraying Athol to Fairlight 29/2/24 C27858	Southland Helicopters Ltd	1,769
29/02/2024	Mowing Mataura Town Stopbanks C27533	K2 Kontracting	1,917
29/02/2024	Repairs Gorge Road Flood Gates Nov 23 - Feb 24 C28239	Osborn Engineering Ltd	15,637
1/03/2024	Cart Rock River Terrace Gore C28760	Fisken Contracting Ltd	1,025
1/03/2024	Willow Removal Flag Staff Athol C27548	AG-Works South	1,815
1/03/2024	Willow Removal & Debris Waikaia C27528	Fisken Contracting Ltd	2,410
1/03/2024	Supply 130 tonne rock to Paddys Ally C27861	AG-Works South	5,226
1/03/2024	Supply 200 tonne of rock Athol C2786	AG-Works South	8,040
1/03/2024	Supply 260 tonne of rock to Eyre Creek C27863	AG-Works South	10,452
1/03/2024	Cart 466 tonne of rock to Eyre Creek C27864	AG-Works South	19,641
1/03/2024	Flagstaff tree removal job C27863	AG-Works South	20,055
18/03/2024	Monitoring Costs for AUTH-20169518	Southland Regional Council	96
19/03/2024	Fairway Spraying Gore C28754	MS Contracting Ltd	5,814
19/03/2024	Fairway Spraying Mataura C28754	MS Contracting Ltd	6,034
31/03/2024	Gorge Road Flood Gates March 24 C28239	Osborn Engineering Ltd	2,865
31/03/2024	Channel C Gate March 24 C28239	Osborn Engineering Ltd	8,129
Total			268,766

Oreti RW

09/01/2024	Spraying Oreti River C28147	Weatheright Roofing Ltd t/a Phil Bevin Spraying	5,750
12/01/2024	Drill & Blast Andersons Quarry C28301	Nelsons Drill & Blast Ltd	14,999
14/01/2024	Labour tree removal Irthing Stream	A K Swann Southern Contracting Ltd	4,650
17/01/2024	Supply materials for culvert repairs	Great Southern Invercargill	134
18/01/2024	Supply materials for culvert repairs	Blacks Fasteners Ltd	38
19/01/2024	Supply Duraveg Berm Mix & D.A.P 20kg C28615	PGG Wrightson Seeds Ltd	765

22/01/2024	Supply materials for culvert repairs	Blacks Fasteners Ltd	59
24/01/2024	Supply materials for culvert repairs	E Hayes & Sons Ltd	25
24/01/2024	Supply materials for culvert repairs	Blacks Fasteners Ltd	178
28/01/2024	Labour tree removal Irthing Stream	A K Swann Southern Contracting Ltd	9,467
29/01/2024	Aerial Spraying Programme Contacts C27716	WSP New Zealand Limited	110
29/01/2024	Supply materials for culvert repairs	Vulcan	132
30/01/2024	Review of Ground Spraying Programme Agreement	Wynn Williams & Co	137
30/01/2024	Supply materials for culvert repairs	Great Southern Invercargill	169
31/01/2024	Oreti River Spraying C28148	Southland Helicopters Ltd	21,725
31/01/2024	Hire Trucks at Winton Bridge C28621	Stirling Contracting	4,995
31/01/2024	Erosion control Oreti River	Stirling Contracting	5,370
31/01/2024	Erosion control Oreti River	Stirling Contracting	5,560
31/01/2024	Erosion control Oreti River	Stirling Contracting	6,750
31/01/2024	Hire Digger at Winton Bridge C28621	Stirling Contracting	13,190
31/01/2024	Clearing willows and edge protection Irthing Stream C27572	Drainage & Excavation Services Ltd	24,588
31/01/2024	Supply materials for culvert repairs	E Hayes & Sons Ltd	116
31/01/2024	Supply materials for culvert repairs	GEM (2004) Ltd	196
31/01/2024	Supply materials for culvert repairs	Pneumatic Contractors Ltd	373
01/02/2024	Oreti River Spraying C28148	Southland Helicopters Ltd	18,734
02/02/2024	Supply signage C28624	NZ Safety Ltd	50
07/02/2024	Oreti River Spraying C28148	Southland Helicopters Ltd	17,425
09/02/2024	Supply materials for culvert repairs	Hirepool Ltd	18
09/02/2024	Supply materials for culvert repairs	Engineering Wholesalers Ltd	266
09/02/2024	Supply materials for culvert repairs	E Hayes & Sons Ltd	275
12/02/2024	Labour to remove trees Wallacetown	A K Swann Southern Contracting Ltd	1,968
13/02/2024	Supply materials for culvert repairs	Blacks Fasteners Ltd	70
13/02/2024	Supply materials for culvert repairs	E Hayes & Sons Ltd	78
13/02/2024	Supply materials for culvert repairs	E Hayes & Sons Ltd	81
13/02/2024	Supply materials for culvert repairs	Great Southern Invercargill	155
13/02/2024	Supply materials for culvert repairs	Great Southern Invercargill	522
16/02/2024	Supply materials for culvert repairs	Blacks Fasteners Ltd	691
20/02/2024	Supply materials for culvert repairs	Blacks Fasteners Ltd	23
21/02/2024	Ground Spraying Iron Bridge	Weathertight Roofing Ltd t/a Phil Bevin Spraying	1,500
21/02/2024	Aerial Spraying Programme Contacts C27432	WSP New Zealand Limited	804
23/02/2024	Supply materials for culvert repairs	Blacks Fasteners Ltd	117
27/02/2024	Ground Spraying Centre Bush & Lochiel Bridges	Weathertight Roofing Ltd t/a Phil Bevin Spraying	1,600
27/02/2024	Supply Duraveg Berm Mix & D.A.P 20kg C28642	PGG Wrightson Seeds Ltd	675
27/02/2024	Supply materials for culvert repairs	GEM (2004) Ltd	1,700
28/02/2024	Carry out mtce Oreti R	Gunther Excavating Ltd	1,710
29/02/2024	Oreti River Spraying C28148	Southland Helicopters Ltd	13,889
29/02/2024	Hire Digger to repair Oporo flood bank C28646	Stirling Contracting	2,270
29/02/2024	Chip Waste and Spread Irthing Stream C2831	DT King & Co Ltd	3,650
29/02/2024	Digger to remove trees Oreti R C28846	Stirling Contracting	5,007
29/02/2024	Digger Hire at Wallacetown to mulch gorse C28640	Ryal Bush Transport Ltd	5,076
29/02/2024	Hire Digger at Wallacetown C28646	Stirling Contracting	8,415
29/02/2024	Hire Digger at Fernhill C28646	Stirling Contracting	11,425
29/02/2024	Hire Digger at Northhope C28646	Stirling Contracting	11,640
29/02/2024	Carry out aerial spraying C28148	Southland Helicopters Ltd	8,704
29/02/2024	Supply materials for culvert repairs	Pneumatic Contractors Ltd	2,566
04/03/2024	Spraying Oreti stopbanks	Weathertight Roofing Ltd t/a Phil Bevin Spraying	1,300
07/03/2024	Supply materials for culvert repairs	E Hayes & Sons Ltd	78
13/03/2024	Supply Duraveg Berm Mix & D.A.P 20kg C28649	PGG Wrightson Seeds Ltd	960
25/03/2024	Follow up spray Taramoa	Weathertight Roofing Ltd t/a Phil Bevin Spraying	363
25/03/2024	Labour tree removal Irthing Stream	A K Swann Southern Contracting Ltd	6,571
25/03/2024	Ferry Rd Stopbank Inspection	Weathertight Roofing Ltd t/a Phil Bevin Spraying	165
26/03/2024	Fencing Materials for Wallacetown C27593	Goldpine Industries Ltd	244
28/03/2024	Supply materials for culvert repairs	PGG Wrightson Ltd	865
31/03/2024	Oreti River Spraying C28148	Southland Helicopters Ltd	4,379
31/03/2024	C Young Catchment Mgmt Support	Colin Young	98
31/03/2024	Cartage of Aggregate to Wallacetown C28317	AG & GJ Whyte Ltd	709
31/03/2024	Hire Digger Remove Fence at Winton C29156	Stirling Contracting	8,172
31/03/2024	Hire Digger Centrebush C29156	Stirling Contracting	8,865
31/03/2024	Hire Digger Winton remove trees C29156	Stirling Contracting	9,890
31/03/2024	Supply basecourse Wallacetown C29155	AG & GJ Whyte Ltd	15,919
31/03/2024	Supply materials for culvert repairs	Pneumatic Contractors Ltd	290
Total			299,450

Te Anau RW

01/01/2024	Supply Chem for Te Anau	Advance Agriculture Ltd	611
01/01/2024	Monitoring Costs AUTH-20171582	Southland Regional Council	40
31/01/2024	Clearing overburden on Upukerora C27563	Te Anau Earthworks & Excavating Ltd	16930
31/01/2024	Mararoa Work C27563	Te Anau Earthworks & Excavating Ltd	29110
29/02/2024	Supply Grass seed for Whitestone Stopbanks C27590	PGG Wrightson Seeds Ltd	293
29/02/2024	Willow Removal Whitestone Stopbanks C27568	Sweeney Excavation Ltd	13828
01/03/2024	Flaxy Creek Maintenance C27568	Sweeney Excavation Ltd	1373
21/03/2024	Upuk Gravel Lease DoC fees	Department of Conservation	250
21/03/2024	Upuk Gravel lease - DoC fees	Department of Conservation	250
21/03/2024	Upuk Gravel lease DoC fees	Department of Conservation	6573
31/03/2024	Mararoa Spray C27594	Southland Helicopters Ltd	11774
31/03/2024	Inspection Flight Te Anau C27594	Southland Helicopters Ltd	2842
31/03/2024	Stopbank Willow Work Whitestone C27568	Sweeney Excavation Ltd	19755
31/03/2024	Mararoa Spray C27594	Southland Helicopters Ltd	11556
Total			115,185

Waiau RW

14/01/2024	Supply labour for Tuatapere flood bank repairs	A K Swann Southern Contracting Ltd	274
29/01/2024	Aerial Spraying Programme Contacts C27716	WSP New Zealand Limited	110
31/01/2024	Smartfix GPS charges	Global Survey Limited	350
31/01/2024	Freight of Fencing Materials Howden Block C27585	Kings Log Transport Ltd	1,398
31/01/2024	Waiau Fencing Clearnace Howden Block	Nightcaps Contracting Ltd	3,509
31/01/2024	Fencing Supplies Waiau Berm Fence C27585	Great Southern Invercargill	14,086
13/02/2024	Supply barrier fencing C28309	NZ Safety Ltd	214
13/02/2024	Birchgrove Holdings Grant Assistance	Birchgrove Holdings Ltd	2,677
14/02/2024	Supply waratahs C28310	Goldpine Industries Ltd	142
21/02/2024	Aerial Spraying Programme Contacts C27432	WSP New Zealand Limited	804
25/02/2024	Waiau Fencing @ Howden Block C27589	Anderson Fencing	20,119

31/03/2024	Waiau Spray C27594	Southland Helicopters Ltd	3,263
31/03/2024	Waiau Aerial Spray C27594	Southland Helicopters Ltd	6,557
31/03/2024	Wairaki & Waiau Aerial Spray C27594	Southland Helicopters Ltd	6,724
31/03/2024	Inspection Flight Waiau C27594	Southland Helicopters Ltd	2,842
Total			63,070

9.3 Operational Updates - Catchment Integration

Objective ID: A1069977

Report by: Fiona Young, Catchment Integration Manager

Approved by: Paul Hulse, General Manager Integrated Catchment Management



Purpose

To update the Regional Services Committee on Catchment Integration work programmes.

Summary

The Catchment Integration division provides advice and education to the community for informed environmental action, and support implementation of the Proposed Southland Water and Land Team and Southland Farm Plans. The team implements a variety of programmes that actively contribute to Environment Southland's vision, mission and strategic objectives.

This report provides an update on some of the projects and workstreams the team are currently working on.

Recommendation

It is recommended that the Regional Services Committee resolves to:

- 1 Receive the report "Operational Updates – Catchment Integration".

Background

In the last few months, Catchment Integration staff have been involved in farm visits, school visits and community events including Catchment Group events and Catchment Liaison Committee meetings. A total of eight Catchment Liaison Committee meetings, four Catchment Group field days, and a workshop on Intensive Winter Grazing consents with Otago Regional Council have been attended since the end of February 2024. These events provide a good opportunity to connect with the community and provide input and resources.

A number of farmers across Southland have been reaching out to request information and assistance on farm planning. The current focus is helping these farmers compile their administrative information and generate the required maps.

Land Sustainability staff have been supporting farmers who are going through the NZFAP Plus programme by helping them complete their water quality testing and to aid understanding of the current state of Hauora of their waterways. The NZFAP Plus programme is an industry lead assurance programme, farmers audited under this programme receive an additional incentive on premium prices. Through the NZFAP Plus programme, farmers are required to undertake a Stream Health Assessment (SHA). A total of 24 SHAs have been completed with a further five to be done in the coming month. There have also been ongoing conversations with Alliance Group Limited to create a training programme for some of their staff, which would enable them to assist their suppliers who want to become NZFAP Plus certified.



Picture: (Left) Land Sustainability Officer Rob Bird and two local farmers emptying macroinvertebrates from their kick net sample into a tray. (Right) An example of a macroinvertebrate sample.

The team has been working hard to increase awareness of the Southland Riparian Project, and to generate the required participation. Landowners are generally supportive of riparian planting and we are slowly building engagement noting financial issues for some farmers this year. Encouragingly, there is appetite from landowners to expand the project beyond riparian areas to support planting in wetlands, gullies and retired critical source areas. Feedback has been also received from local nurseries who are eager for an opportunity to be involved by supplying plants to the project. Any future revisions of the project will take this into consideration.

In 2019, the Matura Catchment Grant fund was set up as a trial to incentivise catchment groups to undertake environmental work using interest from the Matura rating 'disaster reserve'. Not long after it was established the project came to a standstill, however, the Matura Land Sustainability Officers have recently been working on reinstating the grant. There are ongoing discussions between Environment Southland, the Matura Catchment Liaison Committee and Thriving Southland, with the aim to have the paperwork and process finalised shortly so that applications can be processed in the coming months. The grant will allow catchment groups within the Matura catchment to apply for up to \$5k for projects that have environmental benefit. This may include addressing water quality, soil conservation, climate change impacts or biodiversity, for example. The Matura Catchment Grant is an exciting opportunity that will alleviate financial barriers and enable catchment groups to take environmental action, address environmental issues specific to their catchment and strengthen relationships between all involved parties. There has been an increase in the number of environmental education requests in comparison to the same time period in previous years, which has required additional support from Land Sustainability staff. The team have managed to support 80% of the education events requested this term. Staff are keen to continue supporting these events alongside land sustainability work within priority work areas.

We are working on developing resources and information to help keep the community up to date with what's been happening at Council. This development work has involved a cross-organisational team to ensure we can integrate the legal interpretation, the implementation and most importantly the 'why' of a particular requirement. The team understands the importance of having effective and consistent messaging and tools to deliver information that is user focused.

Projects of note

Contaminated Land and Pollution Prevention

Sheep Dip Identification using satellite imagery in Southland

A contaminated land identification project is currently underway by contractors who are carrying out the research project for Council to determine if historic sheep dip sites can be identified through satellite imagery tools. This project aims to develop and trial the effectiveness of an AI based methodology to locate historic sheep dip locations within the Southland region. The methodology will integrate aerial and satellite imagery with existing vector data such as the LUCAS NZ and Hazardous Activities and Industries List (HAIL) database registrations.



The output of the project will be a spatial layer in a format compatible with Environment Southland's software and will be provided with metadata. The layer will require ground truthing, which is planned for the next phase of work.

Waikawa Story Map

The Waikawa Integrated Catchment Management Plan (ICMP) is currently in the draft review stage. Our contracted providers have reached out for feedback and discussion by providing links to the online storymap draft, welcoming written feedback and holding online opportunities to review the draft format and contents together with discussion.

DRAFT WAIKAWA ICMP

VALUES

RICH BIODIVERSITY

- Unique and rare species and habitats.
- Threatened/vulnerable native species populations.
- Ecological functions across all land uses.
- Healthy environment for species and habitats to thrive forever.
- Remnant kōwhiri-flowerwood forests.
- Native wetland and riparian vegetation along the riverbanks and estuary shoreline.
- Extensive native forest cover at headwaters and across the catchment.

THRIVING ECONOMY

- Prosperous economy – employment in farming, industries, conservation, tourism, and others.
- Workable compliance for land use and sustainable management.

CONNECTED COMMUNITY

- People and connections – past, present and future.
- Sharing knowledge and sharing efforts to preserve and enhance shared values.
- Celebrating actions undertaken by landowners and stakeholders to-date.

SUSTAINABLE LAND USE

- Sustainable land use (sustain present condition) and regenerative land use (enhancing for the future) by community, industry and visitors.
- Community participates in learning and sharing knowledge and effective solutions so diverse land uses and native biodiversity can flourish together.
- Community efforts with water schemes, fencing, riparian planting and stock management.
- Water is life and is appreciated.



HEALTHY RIVER

- High water quality from the hills to the sea
- High natural character of the rivers as unstraitened sinuous path and with capacity for large flows.
- Clean freshwater from mountains to the sea supporting native species and habitats, food gathering, mahinga kai, and recreation activities.
- Natural ecological interconnections of the systems - the sea and marine life are dependent on the health of the estuary - the health of the estuary is dependent on the health of the river.
- Community and industry-led actions minimise macro-pollutants, sediment, nutrient and bacteria loads to streams, river and estuary.
- Share experiences for informed actions, both here and with other catchments.
- Careful management of water quality and riparian areas for today and for future generations.

ENJOYMENT OF THE RIVER & CATCHMENT AREA

- The river and estuary are clean and safe for swimming, kayaking and boating.
- Access to walk along the river.
- Healthy food from the catchment, and ability to access it - trout fishing, whitebaiting, gathering kanakana.
- It's safe to swim in, careful management we can ensure this remains the case.
- A place to swim and spend time with family.

NATURAL CHARACTER & LANDSCAPE VALUES

- River, wetlands, native forests, estuary and coast are protected and enhanced.
- The significant views (river, estuary, across catchment, into valley, to sea, and of Manga Piri / Niagara Falls).
- The beauty of the natural environment.
- River retains its natural character - fresh clean water meanders sinuously down the valley with a number of waterfalls and prolific kōwhiri trees, riparian planting and abundant wildlife.
- Estuary retains its natural character and supports fish, shellfish, shore/wading/migratory birds, and sea mammals.
- Visible ecological processes and features such as remnant native riparian vegetation, natural movement of water, extensive native forest and the estuary tidal flat.
- Experiential attributes like bird song, smell of fresh air and sense of remoteness.

MAHINGA KAI

- Manga Piri / Niagara Falls is a significant and special Kāi Tahu traditional mahinga kai (food gathering place).
- Recognise mahinga kai such as manu (birds), ika (fish), wahi tapu (sacred place), and tūrangawewewe (a place where one has a right of residence through whakapapa).
- Ability to protect tikanga (traditional customs and practices).
- Harvest healthy food from the catchment including kanakana, kākahi, trout, inaka, pātiki, ika, and shellfish.



The Storymap holds and graphically displays the wider community's aspirations and values for the Waikawa River and catchment area. It shares stories of individual and family experiences along the river and what it means to them. It also shares stories on activities that have occurred to date in the catchment to learn about and enhance water quality, biodiversity and improve the environment and experiences for all. The values are collated and displayed in the attached wheel of values graphic. The Storymap includes a summary of actions identified by the community that they feel could help achieve their aspirations for the river and catchment. This work is displayed graphically with brief text descriptions and is geolocated on maps. There is also a summary table of recommended actions formatted to align with funding application criteria. The content is a collation of publicly available data and the input received from engagement activities with the community between October 2023 and February 2024.

Feedback so far has generally been supportive of the format of the storymap ICMP.

Additional information that has been received after the draft release from forestry stakeholder through Southwood Export and Te Rere Reserve, along with completed community survey forms dropped at the Waikawa museum will be incorporated in the final contracted product. However, the ICMP is intended to be a living document that the community can continue to contribute to and use.

We are also working on ways to share information gained through Focus Activity Farm Plans, enablement grants, and environmental enhancement funding in the Waikawa catchment.

The final Waikawa Storymap version created by Boffa Miskell is due to be delivered to MfE on 20 May 2024.

Waihōpai Planting Project Overview

The Waihōpai Planting Project stands as a beacon of an integrated approach between catchment operations, land sustainability, education, and community engagement along the banks of the Waihōpai River in Invercargill.

Led by Enviroschools, recent planting initiatives seek to cultivate a deeper understanding and appreciation for the local ecosystem while actively involving schools, community groups, and volunteers in restoration efforts. At its core, the project embodies the principles of hands-on learning and environmental stewardship, empowering participants to become active agents of positive change in their community.

Central to the Waihōpai Planting Project is the planting of native vegetation parallel to the riverbanks, a critical step in enhancing biodiversity and ecosystem resilience. Through hands-on planting sessions, participants gain first-hand experience in ecological restoration while learning about the importance of preserving native biodiversity.

Key updates within the Waihōpai Planting Project:

- at least 12 schools have engaged with the project, equating to over 1,000 students;
- over 1,500 plants have been established;
- at least 14 different native species are represented;
- plants have been chosen to provide shelter and protection for canopy trees to be planted and established at a later date;
- the shelter and nourishment of fauna species has also been a factor in plant selection to increase biodiversity at the site;
- an information panel was installed in 2023 with the support of community groups and schools;
- a bench seat was installed early in 2023 with the support of the SGHS Leo Club;
- TuphMount plant identification plaques have been ordered for installation at the site;
- repurposed bark chip is being laid at the site to support weed control.

The Waihōpai Planting Project serves as a valuable educational tool, engaging students in experiential learning opportunities. Enviroschools facilitates curriculum-linked activities and workshops that explore topics such as ecology, conservation, and sustainability, to foster a deeper connection to the natural world. By immersing students in real-world conservation projects, the project instils a sense of environmental responsibility and empowers the next generation of environmental leaders.



Photo Above: James Hargest Planting Day



Photo Above: Examples of signage for planting sites

Education overview

Environmental Education

This term we have received 33 education requests through our online booking form. This is a large increase from previous years, with schools requesting a range of support from the education team. Stream studies and native plant identification workshops have been popular with schools, as were pest studies and waste minimisation classes. We have managed to complete 80% of these requests with additional support coming from the wider catchment integration team. This demand for our service highlights the need for more resources to help manage these requests and the administrative duties that come with supporting this large volume of work.

Enviroschools

The Enviroschools kaupapa seeks to create a healthy, peaceful and sustainable world through learning and taking action together. The kaupapa is embodied in five Guiding Principles/Ngā Mātāpono. The two Guiding Principles of 'Empowered Students' and 'Sustainable Communities' are explicit in the kaupapa, and the ultimate outcome. The three other Guiding Principles of 'Te Ao Māori', 'Respect for Diversity', and 'Learning for Sustainability' are embedded within the process. These centre on valuing and honouring indigenous knowledge, embracing the richness of diversity, and unleashing the creative potential of young people as active learners.

Schools across the rohe have been incredibly active this term with a large increase in requests for support. As school leaders begin to unwind from the stress of forming annual plans, we have observed an uptake in schools wanting more workshops to help their staff understand how the Enviroschools kaupapa can be woven into their planning documents. These meetings have been pivotal in creating strong connections across the whole school, from board members and principals to the core teaching teams, through to the students we work with every week.

Numerous positive outcomes have resulted from running these meetings, but probably nothing highlights the success of this mahi more than our recent invitation to speak at the Central Southland Principal's Association annual meeting. This is the first time this invitation has been extended to staff.

"Enviroschools integrates well across the curriculum, the resources are valuable, as are the links to the community" - Teacher

Empowered Students

Students have been driving many of the sustainability initiatives in schools this term, with plenty of examples of incredible projects occurring across Southland. For instance, the recent Enviroleaders workshop at Hedgehope School was organised entirely by the active Enviroleaders at the school. Staff and students from Heddon Bush and Thornbury School attended the workshop, and were guided around the numerous projects the students have been working over the last few years.

The success of this workshop highlighted the vast amount of work that the education team has been pouring into the community over the last few years. There are countless benefits to investing in our younger generation around environment stewardship, and this workshop highlighted just how knowledgeable and passionate these students are about protecting our valuable biodiversity assets. Students had an acute awareness of pest eradication methodology and the biodiversity gains that could be made from this investment. This knowledge was quickly soaked up by the invited students and staff alike, with many wanting to carry on this mahi in their own schools. The workshop was so successful that this event will now be run in a different school each term, with invitations being extending out to both schools and community groups.



Regulatory implementation

Land sustainability officers seek foster an engaged and innovative community by working with landowners to identify opportunities to improve environmental practices. As part of this, the team has been undertaking a proactive Intensive winter grazing engagement programme. During the two weeks of 18-28 March 2024, staff were involved in working across Southland to make roadside observations on winter grazing.

The focus of the roadside observations was to identify good management practice, winter crops that had been planted within critical source areas, closer than 5m to a waterway, on sloping land, and paddocks set up for pasture-based wintering.

Across Southland the team has noticed considerable improvement in practices compared to previous years. The team saw great examples of best practice such as exceptional buffers to critical source areas and waterways as per the example photo below and avoiding crop on steeper areas of the paddock.

Our intention is to contact the landowners to ensure they are aware of new rules under the Southland Water and Land Plan for Pasture Based Wintering that will be applicable in the 2025 winter grazing season. In other cases we will offer advice to landowners and discuss management strategies to best mitigate potential impacts and ensure awareness of current regulations.

As part of the proactive Intensive Winter Grazing follow up and advising the wider community on regulations that may impact their activities, the land sustainability team alongside other key departments have been drafting new factsheets in preparation for the Southland Water and Land Plan adoption. The factsheets being drafted include the following topics: Intensive Winter Grazing, Pasture Based Wintering, Cultivation, Feed Pads, Sacrifice Paddocks and excluding stock from waterbodies and are an amalgamation of regional and national rules. The factsheets are an easy resource to provide to members of the community and are an important tool to create consistent messaging from council and provide clarity to the community on specific topics.

Fit with strategic framework

OUTCOME	CONTRIBUTES	DETRACTS	NOT APPLICABLE
Managed access to quality natural resources	X		
Diverse opportunities to make a living	X		
Communities empowered and resilient	X		
Communities expressing their diversity	X		

Attachments

None

9.4 Biosecurity and Biodiversity Operational Report Quarter Three 2023/2024

Objective ID: A1069780

Report by: Ali Meade, Biosecurity and Biodiversity Operations Manager

Approved by: Paul Hulse, General Manager - Integrated Catchment Management



Purpose

The purpose of this paper is to provide an update to the Regional Services Committee on the operational progress of the biosecurity and biodiversity team's work programme, focusing on key outcomes and progress towards annual outcomes.

Summary

The biosecurity and biodiversity team continue to work towards the regional objectives and prioritise. Overall, the programmes are on track to achieve most of the activities planned this financial year. However, changes to the central government approach to biodiversity have impacted the surveying component of Biodiversity Action on the Ground Programme and some of biosecurity programmes, especially progressive containment.

Recommendation

It is recommended that the Regional Services Committee resolves to:

1. Receive the report "Biosecurity and Biodiversity Operations Division Quarterly Report".

Background

The biosecurity and biodiversity team's focus is the operationalisation of the biosecurity strategy, Regional Pest Management Plan (RPMP), Fiordland Marine Regional Pathway Management Plan (FMRPMP) and the biodiversity work programme.

The purpose of the biosecurity programme is to protect the region from harmful species. The work is structured around two core functions; non-regulatory work as defined by the biosecurity strategy and Biosecurity Act related work under the RPMP and FMRPMP. Biosecurity strategy work includes operational expenditure, research and development, and national collaborations.

The biodiversity work programme aims to maintain indigenous biodiversity. The programme is predominately held within the two Jobs for Nature Programmes funded by MFE (Biodiversity Action on the Ground and Fish Passage Remediation); however, Council also delivers some outreach programmes and events designed to increase the regional awareness of biodiversity issues.

Quarter 3 Work Summary

Biosecurity and Biodiversity Community Engagement

During the third quarter we have increased community engagement via attendance at the Waimumu Field Days (see Figure 1), Catchment Liaison Meetings, A&P shows and forestry field days. Staff also attended the Fiordland Marine Research Symposium, hosted by the Fiordland Marine Guardians and the Department of Conservation. At the various events we have attended the following issues were highlighted:

- a concern about the increase in possum numbers;
- an increasing concern regarding nodding thistle spread (sustained control);
- an increasing concern about 'organisms of interest' such as Canada geese, deer and pigs, giant hog weed, scentless chamomile, convolvulus.

World Wetlands Day was celebrated with a screening of Rohe Koreporepo – The Swamp, The Sacred Place on 1 February 2024. A total of 57 people attended the event. A successful Bioblitz was held in Tuatapere, with children from Waiau Area and Hauroko Valley Schools attending. Approximately 20 people attended the evening BBQ and a highlight from the event was the recording of long tailed bats in the area.



Figure 1: Biosecurity and Biodiversity at Waimumu Fielddays

To support community groups with funding now that Jobs for Nature has finished, Environment Southland has signed up to GEM Local (Grants Expertise Management system). GEM Local is a grants database designed to help New Zealand community groups find the right grants for them. This helps groups identify relevant grant opportunities and provides grant preparation tools and training.

This easy-to-use tool provides:

- a grants calendar of relevant grants;
- full access to all New Zealand grant and funder records including trusts and foundations, corporate and community foundations, local, regional and central government grants, and gaming trusts and lottery grants;
- ability to track applications including when funder reports are due;
- practical tip sheets, training videos and writing samples.

Any community group interested in accessing GEM Local or the monthly grants calendar will be able to register their interest.

To access the scheme, community groups must meet ALL the following eligibility criteria:

- must be non-profit;
- must have annual revenue under \$1.5M;
- must deliver projects that benefit the community of Southland and be located within the Southland Regional Council area;
- must complete a short participation survey annually.

Biosecurity – Exclusion Programmes

The ongoing marine exclusion investigations were both closed after lab analysis from NIWA and no further action was required. Taxonomists confirmed that the two potential *Didemnum* species collected from Easy Harbour, Rakiura/Stewart Island, were non-invasive; one was native tunicate *Aplidium oamaruensis* and one

was non-indigenous *Didemnum patulum*. Unfortunately, the potential Australian Droplet Tunicate (ADT) sample was too degraded to analyse, however, MPI advised that considering where it was collected and the massive range extension it would mean for this species, it is unlikely to be the invasive ADT. Routine marine pest surveillance was conducted in Riverton and across Fiordland (from Rakituma/Preservation Inlet to Hāwea/Bligh Sound) this quarter and no new marine pests were found.

The animal team received two wallaby reports. Both reports were investigated but unconfirmed. Information was provided to local landowners. There has been reports of a turtle (probably a red eared slider) in a pond in Invercargill and a *Cyprinid* spp., possibly a wild goldfish, from Kingswell Creek. Neither of these species are pests under the RPMP so there is no planned action, however, both species may become invasive and the risk they pose to Southland will be considered as part of future changes to the RPMP.

Following the inconclusive mouse images from Rakiura, a mouse detection plan has been finalised. Trapping will be focused on the original camera locations and contractors will be on the island at the end of April 2024 and during May 2024.

There were no pest plant incursions reported this quarter.

Biosecurity – Animal Pests

The Sandstone possum control area was successfully completed with an excellent RTC results of 0.3%. Staff changes have delayed the establishment of a second PCA this financial year. The team have focused on continuing maintenance and monitoring whilst recruitment is underway.

Eight existing PCAs received maintenance. Annual possum monitoring is underway. Five of the five monitored sites have achieved their RPMP targets. The programme now covers 405,000 ha made up of 61 separate PCAs (see Figure 2).

The animal pest team also continue to do pest control on the Environment Southland land at the Lower Maita and have managed to reduce possum numbers to a very low level (8% wax tag index which is the equivalent of a 1% RTC).

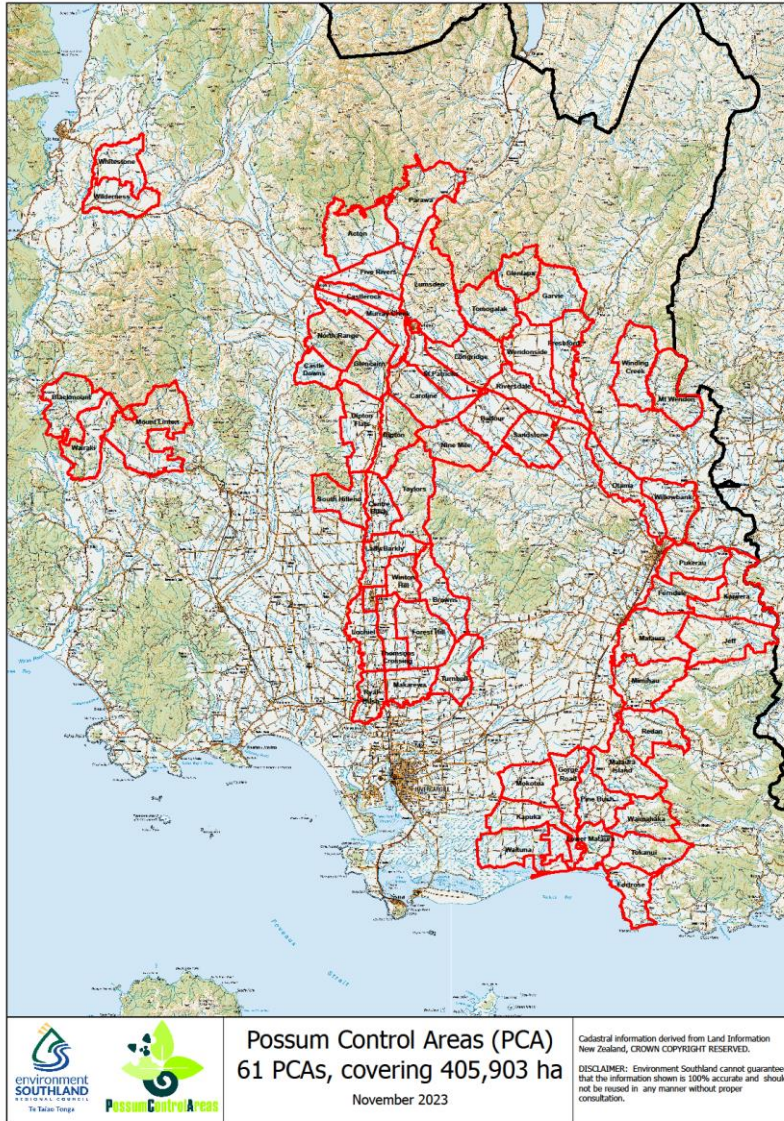


Figure 2: Current Possum Control Area Layout

Whilst the operational work was underway the animal team have also been reviewing the effectiveness of the PCA programme and have identified several challenges, including the underperformance of eight PCAs. Staff are now working on option for improvement and will present their findings back to council over the coming months.

The animal pest team have attended a wallaby field day with Environment Canterbury, the team were taught how to identify wallaby signs (Figure 3) in the field and the use of surveillance techniques such as thermal binoculars.



Figure 3: Wallaby Print, photo taken in Canterbury during the biosecurity team's wallaby training

One unregistered Bengal cat was reported to Environment Southland. The animal pest team have visited the property but have been unable to confirm the presence of a Bengal cat. Information has been left for the property owner. A follow up visit will be completed in Quarter 4.

Biosecurity – Pest Plants

The summer pest plant control season is underway, highlights include zero detections at known parrot's feather and field horsetail sites. Further surveillance in the area around these sites will be completed, however, the results are a positive step towards eradication. The new smilax site identified last year has been controlled for a second time.

German Ivy work continues continuing to show good results, with limited new growth on the Bluff foreshore and no new sites identified despite extensive searching. Unfortunately, there continues to be an increase in purple loosestrife sites with seven new sites found this season. The increase is thought to be due to the increased levels of publicity and surveillance rather than ongoing spread. All known purple loosestrife sites are responding well to control. The site in the Waihopai has been destroyed and a publicity campaign launched in the local area to try to identify the source population (Figure 4).



Figure 4: Purple Loosestrife Flyers have been distributed around the Waihopai stormwater drain in areas of Invercargill

Old Mans Beard sites have been surveyed and controlled, these sites require a large search effort and this year a large infestation was found close to a site that had previously been cleared. An additional reed sweet grass site in the Waiiau was found by the catchment operations team and is being controlled. Siberian Lyme Grass surveillance has increased in the Bluff area.

Buddleia work on the Divide has been delayed due to weather and traffic management requirement, in addition the Department of Conservation completed additional surveillance for buddleia in the Hollyford River and found a number of new sites. The team is now working with the Department of Conservation to determine a long-term strategy for buddleia around Fiordland. Aerial surveillance for buddleia extended up the Mararoa river with nothing found and all known buddleia sites around Whare Creek, Redcliff creek and Duncraig sites have been surveyed and controlled.

The Department of Conservation managed programmes of Boxthorn and Spartina are underway and will be audited by the Environment Southland team during Q4.

Planned wilding conifer control work has been completed at Mid Dome and work in the Takitimus is planned for Q4. However, due to the reduced budget from MPI, this year's control programme is unlikely to have been enough to maintain the gains made in previous years. Mid Dome photopoints have been carried out to help record the changes (Figure 6). In addition to the national programme work, surveillance has identified 70 sites of wilding conifer outside of the Mid Dome and Takitimu Control areas, a rough estimate shows 50 properties and 120,000ha of Southland is now affected. This will continue to grow as more roadside and river wilding sites are identified. Roadside *Pinus contorta* trees have been controlled by Southland District Council and we continue to work with landowners on other outlying trees. The team has also recorded the first known wilding of Larch within the Southland Region with sites at Blackmount and Te Anau confirmed as wilding.



Figure 6: Mid Dome Photo points from 2008, 2016 and 2024 respectively. The initial infestation expands between 2008 and 2016 and then is shown to be dying off following control in 2023.

Radiata and Douglas fir shelterbelts are creating a number of new wilding sites (Figure 7). MPI have developed a new Southland Specific Shelterbelt planting guide to help encourage landowners to plant trees that won't wild in the Southland environment.



Figure 7 Radiata shelterbelt with wildings on the roadside and cycleway in Northern Southland.

Stewart Island/Rakiura site led programmes continue to be successful, all known willow sites are inactive and all knotweed sites are reducing. Voluntary access to complete hawthorn control has become hard in some areas and access under the Biosecurity Act powers may be required to control the last few trees. The ongoing Gunnera containment programme is continuing, less plants are being found each season but mature plants continue to be found. In addition to the pest plant work completed by Environment Southland, a significant amount of weed work has completed by the Stewart Island Rakiura Community Environment Trust (SIRCET) through the Jobs for Nature programme. This has resulted in a large step forward in Darwin's Barberry control, however, there is now minimal funding to maintain the gains. Environment Southland is supporting the programme where we can and contributed funds to the control of mature Darwin's Barberry on the cliffs around Leigh Bay. The Department of Conservation continues to control African Club Moss with support from Environment Southland as well as the other site led plants that they are responsible for.

Biocontrol programmes: Darwin's barberry seed weevil has established and another release has been completed this season. Environment Southland supported Manaaki whenua with non-target species monitoring. Green thistle beetle monitoring has also been completed

Biosecurity – Freshwater

A Check Clean Dry advocate has been employed in collaboration with Fish and Game and MPI. The role of the advocate is to engage with the community at high use freshwater sites in Fiordland as well as ensure signage and gear wash stations are maintained. The Check Clean Guidelines for the North Island have been

updated in response to the Waikato Golden Clam incursion. South Island messaging retains the standard messaging.

Freshwater biosecurity is one of the growth areas for the Biosecurity team and the team will be working over the next financial year to identify improvements.

Biosecurity – Marine

Undaria biomass removal and the *Undaria* containment programme has continued, including the final *Undaria* containment trip to Taiari/Chalky Inlet. The Taiari/Chalky Inlet survey confirmed no *Undaria* is present and the site has now reached a significant milestone of five years without *Undaria*, since the 2019 incursion. It is therefore believed that elimination has been achieved at this site and the site will move from progressive containment to the ongoing marine pest surveillance programme.

Two marine biosecurity compliance trips were completed this quarter: one in Milford Sound and one in the northern fiords. The number of boats checked was slightly lower on these trips due to poor weather at the time of the inspections. Commercial operators had a high clean vessel pass compliance rate, however, for the second year running, compliance of fishing vessels, especially those in Milford has been low. Full results are reported to the Regulatory Committee.

Jobs for Nature: Biodiversity Action on the Ground

During this quarter, the ecological survey programme has continued to be disrupted by the changes at central government. The programme is no longer able to fund any ecological survey that could relate to the National Policy Statement for Indigenous Biodiversity. As a consequence, the programme is now focusing on wetland surveys and the ecological survey contractor has continued to survey Public Conservation Land and local Council reserves. This is continuing to negatively impact the project with less private sites surveyed, meaning there will be less landowners for the biodiversity officers to connect with for management plans and to encourage Environmental Enhancement Fund (EEF) applications. The impact of this is most likely to impact the overall project KPI's rather this year's.

The EEF projects that were approved for 23/24 are underway and most are making good progress. However, it is anticipated that the current financial pressures on landowners will see some of these not succeed and the EEF budget is likely to be underspent at year end as a result of this. Biodiversity Officers have continued to provide management advice and management plans to landowners.

A total of 42 sites covering 998.60ha have had ecological surveys completed this quarter. Ninety percent of landowners who received ecological reports last year have been contacted and offered Environment Southland services. Twenty-nine management plans have been developed bringing the current YTD total to 51 against a target of 80. Eight EEF projects have started work and are delivering their management plans. Environmental Enhancement work completed this quarter includes 250 plants planted into 0.6 hectares of areas outside of wetlands, 998.6 hectares of animal pest control work and 1.79km of fencing established. The programme also planted 700 native trees on Environment Southland land at Lower Maitua.

Jobs for Nature: Fish Passage Remediation

Despite exceeding the survey targets for the year, the project is now falling behind with no fixes completed before the water levels increased in March 2024. The team is working with the contractor to try and bring the project back on track. The case study work is ongoing and on track.

Implications/risks

The ongoing control and containment of widespread pests such as Wilding Conifers, Darwin's Barberry, Cotoneaster Possums and *Undaria* is continuing to be a challenge. These species need ongoing investment and to maintain the gains made by the Jobs for Nature projects (Wilding Conifers, Darwin's Barberry, Cotoneaster and *Undaria*), will require careful planning and prioritising of Environment Southland biosecurity budgets.

The new government has indicated there will be significant changes to the National Policy Statement – Indigenous Biodiversity. This has directly impacted the surveying component of the Biodiversity Action on the Ground programme; the long-term direction of our biodiversity work will need to be reassessed due to these national changes.

Views of affected parties

The views of affected parties have not been considered when creating this report.

Fit with strategic framework

OUTCOME	CONTRIBUTES	DETRACTS	NOT APPLICABLE
Managed access to quality natural resources	x		
Diverse opportunities to make a living	x		
Communities empowered and resilient	x		
Communities expressing their diversity			x

Compliance with Significance and Engagement Policy

There is nothing in this report that triggers this policy.

Considerations

Financial implications

Work carried out this quarter is in line with the Annual Plan.

Legal implications

There are no legal implications of work carried out in this report.

Attachments

None

9.5 Te Puka Rakiura Trust Report for Regional Services Committee

Objective ID: A1073466

Report by: Ali Meade

Approved by: Paul Hulse, General Manager – Integrated Catchment Management



Purpose

To update the Regional Services Committee on the work of the Predator Free Rakiura and Te Puka Rakiura Trust.

Summary

The purpose of this report is to inform Council of the activities carried out by Te Puka Rakiura Trust towards the Predator Free Rakiura Project.

Rob Phillips is Environment Southland's appointed trustee on Te Puka Rakiura Trust.

Recommendation

It is recommended that the Regional Services Committee resolves to:

- 1 Receive the report "Te Puka Rakiura Trust Report for Regional Services Committee".

Background

Predator Free Rakiura is a nationally and globally significant eradication project. When successful, it will be the world's largest inhabited-island predator eradication project.

Environment Southland is one of the key partners and stakeholders of Predator Free Rakiura and the Council's involvement in the project is part of the commitment (via the Biosecurity Strategy), to support Predator Free 2050 initiatives.

Rob Phillips is Environment Southland's appointed Trustee on Te Puka Rakiura Trust. Rob Phillips has provided a report (attached) and will speak to the report at the meeting.

Implications/risks

Nil

Next steps

Nil

Views of affected parties

Nil

Fit with strategic framework

OUTCOME	CONTRIBUTES	DETRACTS	NOT APPLICABLE
Managed access to quality natural resources	x		
Diverse opportunities to make a living	x		
Communities empowered and resilient	x		
Communities expressing their diversity	x		

Compliance with Significance and Engagement Policy

There are no issues within this report that trigger matters in this policy.

Considerations

Financial implications

There are no financial implications directly associated with this report.

Legal implications

There are no legal implications directly associated with this report.

Attachments

2023 04 15 - R Phillips Report to ES Regional Services Committee – PFR (A1073464)

April 2024

Predator Free Rakiura

REPORT TO ENVIRONMENT SOUTHLAND REGIONAL SERVICES COMMITTEE

AUTHOR: ROB PHILLIPS

BACKGROUND

Predator Free Rakiura is a nationally and globally significant eradication project. When successful, it will be the world's largest inhabited-island predator eradication project. At approximately 180,000 hectares, with a permanent resident community of approximately 400 people and active tourism, fishing and aquaculture industries, a predator removal project of this ambitious scale and complexity has never before been achieved. The work is technically and socially challenging and complex, but worth every investment of time and effort.

Predator Free Rakiura will remove six predator species from Rakiura/Stewart Island and its surrounding islands and rock stacks to create a nature haven for the community and nature to thrive. The six predators (ship rats, Norway rats, kiore, feral cats, possums and hedgehogs) are major threats to native plants and animals and indirectly impact the community and industries. A predator free Rakiura will see these species eradicated and ensure their absence is sustained for future generations.

Rakiura hosts a rich diversity of ecosystems, extending in an unbroken sequence from the rugged coastline, through extensive coastal forest and into the alpine tussocks and herb fields. Some of Rakiura's ecosystems - notably the wetlands, sand dunes, estuaries, valleys, and river systems - are of national importance because of their relative intactness compared to most of New Zealand. The coastline is punctuated by over 138 inshore islands and rock stacks. There are kākāpō on nearby Whenua Hou. The Rakiura Tītī Islands are significant for many reasons, including as predator-free refuges for species lost elsewhere.

A groundbreaking project like Predator Free Rakiura will only be achieved by significant investment and strong community support. It will also require a commitment to maintaining its predator free status once success has been achieved.

The benefits however will be across a range of outcomes including conservation and biodiversity, cultural, social and economic. They include;

- Positive impacts on the biodiversity on Rakiura including manu (birds), bats, lizards, and Invertebrates and improve the long-term health of trees, shrubs and herbs.
- Providing an opportunity to reintroduce species no longer able to survive on the island, like kākāpō.
- Prevent the extinction of critically endangered species such as the tūturiwhatu – Southern NZ Dotterel.
- Reduce risk of re-incursions to islands which are already predator free, e.g. Ulva Island and some tītī islands.
- Tourism and eco-tourism opportunities
- Potential employment opportunities within the project
- Mahinga kai and cultural harvest opportunities

Environment Southland has had a long involvement in the project including a position on the Predator Free Rakiura Engagement and Advisory Group (formally the PFR Leadership Group) and formally signed up to the Predator Free Rakiura Memorandum of Understanding in July 2019.

In 2022, Te Puka Rakiura Trust (the Trust) was established in collaboration with Mana Whenua, the Rakiura community, Department of Conservation, Southland District Council, Environment Southland and other stakeholders, to undertake the Project. The Trust is responsible for overseeing the design and implementation of the eradication plan and to provide governance for the Project. Environment Southland is one of the key partners and has a place on the Trust board. Rob Phillips is Environment Southland's appointed trustee on the Trust.

PROGRESS REPORT

The Trust's focus since the previous report to the Regional Service Committee has been on establishing a project team, seeking substantial funding, and developing a work programme for delivering the eradication.

Under the leadership of the former project director, Campbell Leckie, Predator Free Rakiura has established systems and processes to operate efficiently, effectively, and more importantly, safely.

An ambitious work programme was completed by Predator Free Rakiura over the course of 2022/23 year. See the attached report: *Mai I Mua Ki Heke Mai: From Past to Future - Predator Free Rakiura's Year in Review 2022/23*

A brief summary of the achievements included in the report includes:

- Built a deeper understanding of Ngai Tahu's expectations and aspirations for Predator Free Rakiura.
- Increased the presence and profile of the project through 40-50 presentations or interviews including TV, Radio and numerous groups as well as numerous conversations and discussions with a wide range of stakeholders.
- Implemented a four-year \$2.8 million combined research partnership with Manaaki Whenua which will be critical to answering the key research questions the project needs to understand to be successful. The partnership offers an opportunity to integrate other key partners into our research programme, chiefly the incorporation of matauranga māori.
- Research projects were delivered, including eDNA sampling for mice on Rakiura and Hedgehog survey work around the broader Oban area.
- Developed foundational reports, pulling together the necessary information about on-island operational, logistical, environmental and social factors which will impact the project.

Te Puka Rakiura Trust, as governors for the project, entered into conversations with a number of potential funding partners to secure the significant funding needed to implement this internationally significant project. The Trust is optimistic that agreements can be successfully concluded in 2024.

The work of the Predator Free Rakiura Engagement and Advisory group (PFREAG) has been important and it continues to provide advice and feedback to the Trust.

The Department of Conservation (DOC) is a key partner and has provided funding for Predator Free Rakiura's programme to date. DOC has also supported the Trust through appointing a senior liaison officer to attend Trust meetings.

Towards the end of the 2023 calendar year, there were substantial changes in staffing at Predator Free Rakiura. The trust undertook a recruitment process in January 2024, and has recently appointed a new General Manager, Darius Fagan, who will start with the project in May. An Operations Manager for Predator Free Rakiura will be appointed in the coming months.

Predator Free Rakiura is grateful to Environment Southland for its ongoing support, including the part-time secondment of Ali Meade to the role of Interim Project Director for January-April of this year.

Further, Environment Southland has recently recruited a Principal Biosecurity Officer, who will be seconded to PFR for 50 per cent of their time for the next year and will lead the development of a Biosecurity Plan.

More recently the work has been focussed on preparing an implementation plan setting out how a Predator Free Rakiura will be delivered. It is an integrated plan which encompasses an operations plan (how the eradication plan will be delivered), the research required, the approach to communication and engagement planning, and an overview of the necessary biosecurity measures and outcome monitoring which will be required. The plan will be an important basis to guide and inform funding decisions for the future of the project.

LOOKING AHEAD

The next 12 months will be focused on:

- Finalising the Implementation Plan for Predator Free Rakiura, with a particular focus on the Operational Plan; including eradication methods and timeframes.
- Progressing a Biosecurity Plan, which will be supported by a biosecurity pathway study being undertaken by CEBRA (Centre of Excellence for Biosecurity Risk Analysis, University of Melbourne).
- Developing and implementing a Communication & Engagement Strategy based on the confirmed Implementation Plan which outlines key messages, roles, responsibilities, and timeframes.
- Delivering a research programme in partnership with Manaaki Whenua,
- Progressing work on Ngāi Tahu Aspirations for Rakiura
- Developing an effective outcome monitoring programme to demonstrate how Predator Free Rakiura will make a difference. This information will be important to demonstrate value for money and return on investment.



Mai i mua ki heke mai

FROM PAST TO FUTURE

PREDATOR FREE RAKIURA'S YEAR IN REVIEW
2022-2023





Restoring our natural haven Rakiura, mauri ora!

Imagine waking up to a day filled with birdsong. After the sun sets and our glowing skies turn to nightfall, you experience the rustle of kiwi and bats flitting under our starsprinkled sky. You can feel the distant boom of the kākāpō before your ears register the sound. Our taonga are protected, our forests are recovering and our community is thriving.
This is a Predator Free Rakiura.

Mo tatou, a, mo ha uri a muri ahe nei For us and for generations to come

Predator Free Rakiura is a nationally and globally significant eradication project. When successful, it will be the world's largest inhabited-island predator eradication.

At more than 1750,000 hectares, with a permanent resident community and active tourism, fishing, and aquaculture industries, a predator removal of this ambitious scale and complexity has never before been achieved.

Predator Free Rakiura is entering its next significant phase: securing sufficient funding while getting planning and operational work underway to eradicate predators, and to ensure protection can continue into the future.

A groundbreaking project like Predator Free Rakiura will only be achieved with significant investment and strong community support.

It will also require a commitment to maintaining its predator free status once success has been achieved.



We have the support Of our major funders and iwi partners



Our Targets

What we aim to protect



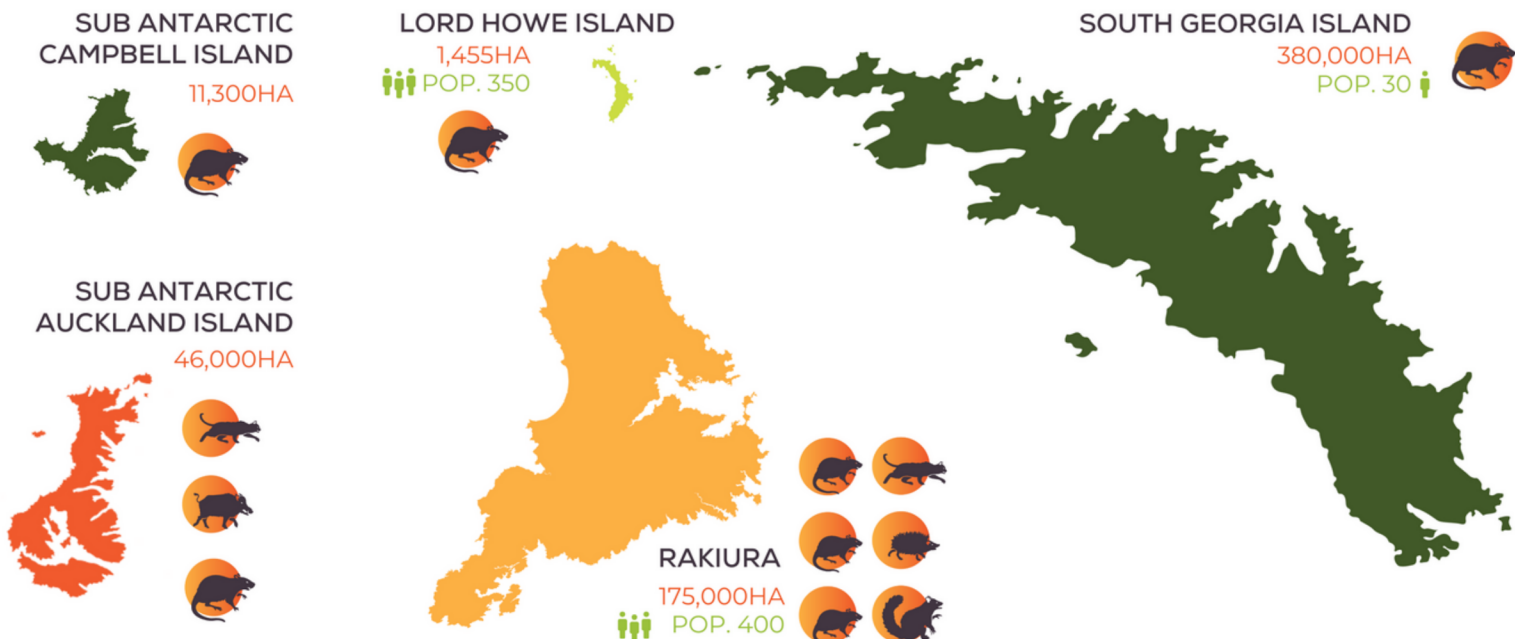
Three species of rats:
 Norway
 Ship rats
 Kiore

Feral Cats
 Hedgehogs
 Possums

Some examples of native species:
 Tieke
 Tūturiwhatu
 Rakiura Tokoeka
 Harlequin gecko
 Flora & Fauna
 Long-tailed pekapeka



How Rakiura compares Island eradications around the globe



Mai i mua From Past...

OVER THE PAST YEAR WE'VE ACHIEVED...

MANAAKI WHENUA RESEARCH PARTNERSHIP

YEARS TO COMPLETE

4

COMBINED FUNDING

\$2.8M

POSSIBLE RESEARCH PROJECTS

15



MOUSE EDNA &
HEDGEHOG
INVESTIGATIONS



Mai i mua From Past...

OVER THE PAST YEAR WE'VE ACHIEVED...

IWI & MANA WHENUA CO-DESIGN WORK

We've been building our understanding of te ao Māori, the aspirations and expectations of Ngāi Tahu, and especially of Rakiura Whānau Whānui. In the next year, we will strengthen these relationships and identify ways to collaborate.



DIVING INTO DETAIL

We have expanded our knowledge of on-island operational, logistical, environmental, and social factors which will impact our mahi. We've created a high-level guide for to make sure our team has the tools they need to deliver, for example, on-the-ground operational work and research projects. This includes things like infrastructure on the island, weather patterns, and details of Rakiura's unique geography which could help or hinder eradication efforts and biosecurity planning.



Mai i mua From Past...

OVER THE PAST YEAR WE'VE ACHIEVED...



- HEDGEHOG SURVEY** (Icon: Hedgehog)
- BUILT A TEAM** (Icon: Three people)
- MOUSE EDNA INVESTIGATIONS** (Icon: Magnifying glass)
- SUPPORTED FERAL CAT BAIT TRIALS** (Icon: Cat)
- EXPLORING PARTNERS & FUNDING** (Icon: Dollar sign)
- MAJOR REPORTS UNDERWAY** (Icon: Document)

Ki heke mai To Future...

THE YEAR AHEAD

We are committed to building iwi and community support for the project - almost everyone supports the idea of a Predator Free Rakiura but we know that you want to better understand the tools and techniques that will be used, and what impacts these may have on the ecosystem and the community. We need to learn more so that we can share what we find out and work with you on solutions.

Predator Free Rakiura will need significant funding to eradicate predators and to build a flourishing sanctuary for our taonga, and our people. We're exploring potential partners who might be interested in helping to fund this lofty goal.

We already have a strong understanding of 'why' a Predator Free Rakiura should happen, but we need to figure out more about the 'how'. We'll do this by continuing to develop and implement our Manaaki Whenua Research partnership, and exploring ways to support our partner organisations with work they're already planning. Some of our work on understanding the 'how' will also include some 'behind the scenes' work - linking with scientists and experts around the world who can provide evidence of what has worked elsewhere, and who can educate us on what is needed for a biosecurity border - it's not just about removing the predators - but keeping them out, too!



- SECURE PARTNERS & FUNDING** (Icon: Dollar sign)
- EXPLORE BIOSECURITY OPTIONS** (Icon: DO NOT ENTER sign)
- INCREASE CONNECTIONS WITH RAKIURA COMMUNITY** (Icon: Three people)
- IDENTIFY TOOLS & TECHNIQUES** (Icon: Gear and wrench)



PREDATOR FREE RAKIURA

Connect with us
Find out more

 WWW.PREDATORFREERAKIURA.ORG.NZ

 INFO@PREDATORFREERAKIURA.ORG.NZ

 WWW.FACEBOOK.COM/PFRAKIURA

 WWW.LINKEDIN.COM/PREDATOR-FREE-RAKIURA

Our thanks...

PHOTOGRAPHS PROVIDED BY

B Maryns · Nir Ketaru · Craig McKenzie · Te Rūnanga o Ngāi Tahu
Sandra Whipp · V Zintzen · Ty Conner & Mike Douglas



9.6 Group Work Programme Update (as at 1 May 2024)

Fiona Young will be in attendance to speak to this item and provide a presentation.

Overview

The Integrated Catchment Management Group is responsible for:

- undertaking operational functions on behalf of the Council in line with the applicable Act, existing plans, strategies and by-laws
- Providing advice and support to landowners, consent holders, stakeholders and partners in line with the applicable act, existing plans, strategies and bylaws
- identifying and managing strategic relationships and partnerships with a range of organisations, groups and individuals
- aligning the Council's non-regulatory functions with regulatory activities across catchments
- supporting the formal review and amendment of existing plans, strategies and by-laws
- Applying a whole of catchment approach with regards to our work programmes.

Matters of interest

A table of current work streams appended for councillors' information.

Group Work Programme Update (as at 1 May 2024)

2023/24 'Action Ahead' summary

	NEXT MILESTONES	STATUS	RELEVANT DATES
1. Maitara - Integrated Catchment Management Report	Presentation on Environment Southland, iwi and other stakeholders attributed with the Maitara Catchment.	Ongoing	May 2024
2. Waiau – Integrated Catchment Management Report	Presentation on Environment Southland, iwi and other stakeholders attributed with the Waiau Catchment.	Ongoing	August 2024
3. Oreti and Aparima – Integrated Catchment Management Report	Presentation on Environment Southland, iwi and other stakeholders attributed with the Oreti and Aparima Catchments.	Ongoing	October 2024
4. Catchment Planning – Activity Update	Presentation on Catchment Planning Activities underway at place across the region	Ongoing	August 2024
5. Regulatory Implementation – Activity Update	Report providing an overview and progress report on implementation activities related to the Proposed Southland Water and Land plan.		October 2024

6. Intensive Winter Grazing – Activity Update	Presentation and report on key key operational priorities priorities, providing progress reporting and next steps.	Ongoing	August 2024
7. Gravel Management – Activity Update	Presentation and report on key Integrated Catchment Management priorities, providing progress reporting and next steps.	Ongoing	October 2024
8. Farm Plans – Activity Update	Presentation and report on key operational priorities for farm plan implementation, providing progress reporting and next steps.		2024

Group Work Programme Update (as at 1 May 2024)

9. Operational Partnership Programmes – Update	Presentation and report on operational partnership programmes that Environment Southland are one of a number of contributors to shareholder aligned priorities across our main catchments. <ul style="list-style-type: none">- Progress updates and next steps will be provided	In progress	July 2024
---	---	--------------------	------------------

Public excluded business

The following section is confidential.

Item 11.1 – Lease inspection

Section under the act	The grounds on which part of the Council or committee may be closed to the public are listed in s48(1) of the Local Government Official Information and Meetings Act 1987 (the act)
Sub-clause and reason	S.7(2)(a) To protect the privacy of natural persons, including that of deceased natural persons.

11.1 Leasehold Property Report

Objective ID: A1071284

Report by: Doug McIntosh, Property Officer

Approved by: Dom Rikiti, General Manager Business Services

Public excluded

Section under the act	The grounds on which part of the Council or committee may be closed to the public are listed in s48(1) of the Local Government Official Information and Meetings Act 1987 (the act)
Sub-clause and reason	S.7(2)(a) To protect the privacy of natural persons, including that of deceased natural persons.

Purpose

To update the committee on lease inspections since the last meeting and advise there were no compliance issues since the last update.

Recommendation

It is recommended that the Regional Services Committee resolve to:

- 1 Receive the report "Leasehold Property Report".

Report

Quarterly inspections were carried out in December 2023 and March 2024 are per our usual cycle. The properties were all compliant, no actions were required to be taken by lessees.

Damage from floods.

Damage to fences resulting from the September 2023 floods totals approximately \$28,000 to date. The change to commercial leases requires Council to pay the cost of flood damage. Overall, this is a small cost considering the size of the flood. Luckily there was not a lot of debris on the Maitai River.

Wetlands

Following investigations by the biodiversity team and the council's wetland ecologist, council leasehold land was found to have natural inland wetlands in the lower Maitai.

Wetland plants were found on the Stirling and the Walsh Blocks bordering the Fortrose Estuary.

The NPS-FM definition of a wetland is:

- 1 (e) ii has vegetation cover comprising more than 50% exotic pasture species as identified in the National List of Exotic Pasture using the Exclusion Assessment Methodology.

As the blocks are deemed natural inland wetland, the stock exclusion rule applies.

An agreement was reached with the lessee, Scott and Christine McKenzie, to remove the blocks from the lease at renewal of their lease on 1 January 2024. A total of 57 hectares on the Stirling block and 70 hectares the Walsh block were removed from the lease.

This is a loss of rental of \$15,600 per annum. \$10,100 on the Stirling and \$5,500 on the Walsh block. All areas adjoin another wetland that has previously been taken from the original lease in the early 2000's. The leasehold property budget with the LTP, acknowledges that parcels of land will transfer out of the leasehold portfolio for instances as described in this report. The budget has assumed the loss of such rental income will be offset by increases in the balance of leases over time through the normal process of renewal.

Attachments

Lease inspection reports for December 2023 and March 2024 quarter (A984064)

Lease Inspection Report

File: A1374

September 2023 Quarter

The September 2023 quarter lease inspection report appended contains the following individual inspection reports:

Block	District	Lessee
Bernard	Kingswell	R Jack
Bowen 2	Ferry Road	W & M Muller
Bowen 3	Ferry Road	M Swain
Brash	Lower Mataura	K J Brash
Buchanan	Ferry Road	W & M Muller
Burgess	Ferry Road	W & R Cresswell
Golden	Lower Mataura	L Frisby
Henderson	Lower Oreti	W Muller
Marshall	Lower Oreti	D Marshall
Muir	Waihopai	K Muir
Pascoe	Ferry Road	W & R Cresswell
Payne	Lower Mataura	C Shaw
Penno	Ferry Road	W & R Cresswell
Smillie	Kingswell	R Jack
Smith	Lower Mataura	J Smith
Stirling	Lower Mataura	S McKenzie
Welsh	Lower Mataura	K J Brash

Pest Management Properties

Type	District	Occupier
Depot	Te Anau	Closed
House	Te Anau	T Smith
House	Te Anau	ES Staff

District:	Kingswell	Block:	Bernard, Findlay, Williams
Name:	R Jack	File No:	qA113
Address:	PO Box 78 Winton 9741	Area:	11 ha approx
Date Inspected:	30.9.2023		
Lease Details:			
Term:	3 years	Expires	30 September 2026
	Farm Environmental Management Plan	Nutrient Budget	
	Too small an area		

Report

Drainage:

Kingswell creek cleaned March 2019.
All open drains tiled. Kingswell Creek fenced.
Tiled drain relayed from northern boundary giving out to neighbour. Novaflow squashed.

Weed Spraying:

Minor broom on right bank below old dairy factory and gorse on banks of Kingswell Creek – sprayed.

Pasture:

Pastures are acceptable. New grass on Williams block regressed 2022.

Fences/Gateways:

Fences and gateways are good, two internal gateways are gravelled.

Water Scheme:

Water in and working from Jack freehold.

Access Maintenance:

Acceptable.

Buildings

3 bay haybarn (12m x 15m) on Williams block in good condition.

Health and Safety:

Has health and safety plan and no new hazards.

Lessee Compliance:

No compliance issues.

District:	Ferry Road	Block:	Bowen 2
Name:	WM & MA Muller	File No:	qA163
Address:	129 Fosbender Road, Otatara No 9 RD, Invercargill	Area:	71.8671 ha
Date Inspected:	28.8.23		
Lease Details:			
Term:	5 years	Expires	30 September 2025
	Farm Environmental Management Plan		Nutrient Budget
	Yes		yes

Report

Drainage:

Drainage acceptable. 600 dia pipe installed paddock 6 to allow better passage of water from the Bowen 3 block. Most drains cleaned. Leaseholder has own digger. To spray some drains. New Floodgate Camp Road at stopbank.

Weed Spraying:

No gorse.

Pasture:

Pastures acceptable.

The pastures on this block are well managed, form part of the milking platform and are much improved. Removal of old spoil heaps and levelling of paddocks is now finished. New grass in P13.

Fences/Gateways:

Fences are acceptable – majority renewed with one left to upgrade.

Gateways are acceptable. P01 fencing to get an upgrade.

Water Supply:

Water supply scheme installed in 2003 is serviced from adjacent Leaseholders freehold property - 18 troughs in place are operative.

Access Maintenance

New gravel lanes well maintained.

Health and Safety:

Leaseholder has a plan. No new hazards.

Lessee Compliance:

Significant improvements in stock management is reflected in enhanced pastures. No issues.

District:	Ferry Road	Block:	Bowen 3
Name:	MJ Swain	File No:	qA164
Address:	71 Campbell Road, RD 3, Winton 9783	Area:	102.186 ha
Date Inspected:	17.8.23		
Lease Details:			
Term:	3 years	Expires	31 March 2026
	Farm Environmental Management Plan	Nutrient Budget	
	Yes	No	

Report

<p>Drainage: Some drains require cleaning. To be completed when digger hired.</p>
<p>Weed Spraying: Gorse along fence lines, annual spraying programme.</p>
<p>Pasture: Floodfree pastures are good as are the riverside paddocks. The paddocks fronting Howell Road are very wet and generally of poor quality.</p>
<p>Fences/Gateways: Fence maintenance is an ongoing necessity. New boundary fence Moffatt and West Plains Road.</p>
<p>Water Supply: Water scheme part of the Douglas block. Water scheme works well.</p>
<p>Access Maintenance Gravel access lane along side southern boundary is good. New lane through middle. Road culvert moved for better access to lane.</p>
<p>Buildings Yards are good.</p>
<p>Health and safety: Leaseholder has a plan. No new hazards.</p>
<p>Lessee Compliance: Good no issues. Bowen wetland of some 8ha adjacent to the Oreti River developed in Nov 1998 – excellent wildlife habitat.</p>

District:	Mataura	Block:	Brash
Name:	K Brash	File No:	qA128
Address:	15 Welsh Road, RD 3, Winton 9720	Area:	105 ha
Date Inspected:	3.9.23		
Lease Details:			
Term:	5 years	Expires	30 June 2023
	Farm Environmental Management Plan		Nutrient Budget
	Yes		

Report

Drainage:

Leaseholder is a member of Lower Mataura drainage scheme due to commence Nov 2021.
Titiroa cleaned Jan 2022.

Weed Spraying:

Rushes on east side of Titiroa Stream topped. Minor gorse along the Morton boundary.

Pasture:

Pastures generally are very well maintained.
The pastures on this property are remarkably free of pasture weeds in spite of east side lower flats being wet in winter months. Paddocks west of Flemming Road used for balage.

Fences/Gateways:

Most fences are acceptable, some upgrading of fencing required. 400m replaced along road.

Water Supply:

Water scheme completed and extended to Welsh block.

Access Maintenance

Good access with reasonably well maintained gateways. Some gravelled.

Buildings

Implement shed on Springfield Road, concrete block construction.
Haybarn on Fleming Road repaired.

Health and safety:

Leaseholder has a plan, and there are no new hazards.

Lessee Compliance:

No compliance issues.
Leaseholder has taken over the Welsh block.

District:	Ferry Road	Block:	Buchanan
Name:	WM & MA Muller	File No:	qA159
Address:	129 Fosbender Road, Otatara No 9 RD, Invercargill	Area:	10.88 ha
Date Inspected:	18.8.23		
Lease Details:			
Term:	5 years	Expires	30 September 2025
	Farm Environmental Management Plan		Nutrient Budget
	Yes		Yes

Report

Drainage:

Open drains cleaned. Some require spraying

Weed Spraying:

Minor gorse along eastern and southern drains.

Pasture:

Much improved in northern paddock as a result of good grass and stock management.
No stock on property at inspection.
Block now used for milking platform.

Fences/Gateways:

Fences are good and gateway is gravelled.

Water Supply:

Two troughs serviced from leaseholder pump on freehold land.

Access Maintenance

Access is acceptable.

Buildings: N/A

Health and Safety:

Bill and Margaret have a plan, and talking to Bill no new hazards.

Lessee Compliance:

This small unit forms part of larger lease held by Mr & Mrs Muller.
Part of this block and adjoining Gibson block has been developed into an 8 ha wetland at the Waikiwi Stream confluence with the Oreti River.
Pastures are significantly improved under current leaseholder.

District:	Ferry Road	Block:	Burgess/Murphy
Name:	R & R Cresswell	File No:	qA156
Address:	Hughes Road, RD 9, Invercargill	Area:	64.984 ha
Date Inspected:	26.9.23		
Lease Details:			
Term:	3 years	Expires	30 September 2026
	Farm environmental Management Plan		Nutrient Budget
	Yes		

Report

Drainage:

Drains are acceptable, low water levels. Leaseholder has own digger and has sprayed all drains.

Weed Spraying:

Gorse and broom on this block is under control. Weeds sprayed with annual programme.

Pasture:

Improved and renewed pastures are in good condition.

Fencing, both drain and internal continue in the Murphy block to help with the development of the rough areas.

Fences/Gateways:

Acceptable fences – some larger paddocks need subdivision – electric break fencing used.

Old pine trees on south boundary are collapsing.

Gateways are acceptable.

Water Supply:

Stock water scheme serviced from Penno floodfree. Water installed by new Leaseholder in April /May 2012 after taking over the blocks. All paddocks have water.

Access Maintenance

Main gravel access land through centre of property is good.

Health and Safety:

Leaseholder has a plan. There were no new hazards.

Lessee Compliance:

No compliance issues.

A new set of yards built May 2013.

Approx 7 Hectares of pine trees are on this property milled April 2013. Pruned 2023.

District:	Mataura	Block:	Golden
Name:	L C Frisby	File No:	qA124
Address:	Titiroa, RD 5, Invercargill	Area:	62.5 Ha
Date Inspected:	14.8.23		
Lease Details:			
Term:	3 year	Expires	30 June 2026
	Farm Environmental Management Plan		Nutrient Budget
	Yes		

Report

Drainage:

Cleaned as part of the Lower Mataura Lessee Drainage Scheme – acceptable, low water levels. Titiroa cleaned Jan 2022.

Drains sprayed.

Weed Spraying:

There are no weeds on this property. Sweet Reed Grass is on the banks of the Titiroa Stream, sprayed.

Pasture:

Pastures are in excellent condition.

Property is currently used for mixed farming.

Flax planted as shelter along the northside of P12 & P13.

Fences/Gateways:

Fence maintenance continues. Gateways gravelled.

Water Supply:

Installed and operative. Troughs gravelled.

Access Maintenance

Gateways good.

Buildings

Cattle yards shared with adjacent O'Connell block have been upgraded.

Health and Safety:

Leaseholder has a plan. There are no new hazards.

Lessee Compliance:

Substantial works have been completed by new Leaseholder.

No compliance issues.

District:	Lower Oreti	Block:	Henderson
Name:	WM Muller	File No:	qA146
Address:	129 Fosbender Road, No 9RD, Invercargill.	Area:	86.6 ha
Date Inspected:	28.8.23		
Lease Details:			
Term:	5 years	Expires	31 August 2025
	Farm Environmental Management Plan		Nutrient Budget
	Yes		

Report

Drainage:

Some drains cleaned. Most sprayed.

Weed Spraying:

Scattered gorse, mainly along drains and in the central undeveloped peat block. Annual programme.

Pasture:

Northern pastures are generally good and well managed. Southern blocks are sandy/peaty soils. Winter crop in P11, P16, P23, P24, P25 and P30. Buffers worked well. Also bales on grass for winter grazing.

Fences/Gateways:

A lot of work has been completed to improve the quality of fencing on the block. Temporary electric fencing utilised in cattle blocks.

Water Supply:

Water scheme installed to cattle blocks – 22 troughs in place, an additional 4 placed – serviced from Leaseholders freehold. The waterline comes across the Ferry Road bridge.

Access Maintenance

Gravel lanes gravelled.

Buildings

Old school house has been reclad and the remaining shed and covered yards are to be progressively reclad. Half completed.

Health and Safety:

The Muller's have a plan. No new hazards.

Lessee Compliance:

Discussed pest animal, drain fencing, drainage and winter grazing with the Leaseholder.

Payments in advance up to date.

Riverside berms (approx 8.8 ha) area extended and removed from lease for wildlife habitat.

District:	Lower Oreti	Block:	Marshall
Name:	DJ Marshall	File No:	qA143
Address:	532 Taramoa Road, RD 4, Invercargill	Area:	145.12 + 100.44 = 245.56 ha
Date Inspected:	21.9.23		
Lease Details:			
Term:	5 years	Expires	1 October 2025
	Farm Environmental Management Plan		Nutrient Budget
	Yes		

Report

<p>Drainage: 3 main outfalls cleaned by Rating District July 2019. All drains cleaned Sept 2021. Sprayed</p>
<p>Weed Spraying: Gorse on fencelines and drain banks and in rough corner. Has annual programme.</p>
<p>Pasture: New grass in P14, P24, P26 & P29. Winter crop in P12, P25, & P78. Pastures well managed through the winter but access off lanes and gateways require work.</p>
<p>Fences/Gateways: Fences are conc post with failing issues – programme of renewal continues. Gateways used for winter access also cut up – repairs required in spring. 700m of new fence erected.</p>
<p>Water Supply: Water scheme upgraded.</p>
<p>Access Maintenance: Lanes are in need of maintenance. Gravel already stockpiled for job.</p>
<p>Buildings Old house removed and replaced in March 2007 with relocatable 160 m² residence – huge improvement. New blinds installed July 2023. Woolshed with attached sheeyards in fair condition for age. Haybarn/implement shed in good condition. New implement shed erected July 2009. New flooring lounge dining area July 2022. Yards upgraded, materials supplied ES Labour 80 hrs supplied by Lessee.</p>
<p>Health and Safety: The Leaseholder has a health and safety plan. There are no new hazards.</p>
<p>Lessee Compliance: Stock management and stewardship has been good with few issues (gateways, access, fencing programme, gorse) for attention and discussed with Leaseholder.</p>

District:	Waihopai	Block:	Muir
Name:	K J Muir	File No:	qA178
Address:	216 Matai Road West RD 3 Wyndham 9893	Area:	15.2456 ha
Date Inspected:	29.9.23		
Lease Details:			
Term:	3 years	Expires	30 September 2026
	Farm management Plan		Nutrient Budget
	Area too small		

Report

<p>Drainage: West boundary drain alongside Devlin block – acceptable.</p>
<p>Weed Spraying: Minor gorse in Waihopai Stream berm.</p>
<p>Pasture: Regular fertiliser application. Property utilised for baleage.</p>
<p>Fences/Gateways: Generally fencing is good. Gateways gravelled.</p>
<p>Access Maintenance: Existing access off Mill Road has had a ramp constructed to try and help vision when exiting the property after the bridge approaches were raised.</p>
<p>Buildings N/A</p>
<p>Health and Safety: Leaseholders have a health and safety plan. No new hazards.</p>
<p>Lessee Compliance: Acceptable management of property. No compliance issues.</p>

District:	Ferry Road	Block:	Donaghy/Pascoe
Name:	RW Cresswell	File No:	qA150
Address:	Hughes Road	Area:	57.0 ha
Date Inspected:	26.9.23		
Lease Details:			
Term:	3 years	Expires	1 October 2026
	Farm Environmental Management Plan		Nutrient Budget
	Yes		

Report

<p>Drainage: Open drains all in good condition, All drains sprayed. – Leaseholder has own digger.</p>
<p>Weed Spraying: Minor scattered gorse along Waikiwi Stream spoil banks and fence lines. Programme in place to spray gorse and ragwort each year.</p>
<p>Pasture: Pastures are good and are well managed. West pastures adjacent to Howell Road are good and the paddocks in the centre north have been renewed.</p>
<p>Fences/Gateways: All old fences on the Pascoe block upgraded bar one which runs off Howell Road. Boundary fence with Burgess block completed.</p>
<p>Water Supply: Stockwater scheme to service 9 paddocks constructed in 2002 – supplied from adjacent Penno block. One or two troughs require gravelling.</p>
<p>Access Maintenance: Good access, gateways are well maintained. Gravel lane off Staunton Road to old sheds grassed over but still acceptable. Some gateways need attention.</p>
<p>Buildings: Old disused cowshed/yards in poor condition – roof blown off in Nov 97. Old disused implement shed and haybarn demolished and partly removed. This is in conjunction with some tree removal and drain fencing, which will allow for better stock management.</p>
<p>Health and Safety: Leaseholder has a plan. With whitebaiting starting there are people around the Waikiwi Stream. No new hazards.</p>
<p>Lessee Compliance: Good property management – no compliance issues. Leaseholder has made considerable improvements to the property through pasture renewal, fencing and stock water scheme.</p>

District:	Mataura	Block:	Payne/Stirling floodfree
Name:	CR Shaw	File No:	qA125
Address:	1000 Seaward Downs Gorge Road, RD 3 Wyndham 9893	Area:	105.5 + 32.5 floodfree = 138 ha
Date Inspected:	6.9.23		
Lease Details:			
Term:	3 years	Expires	1 July 2026
	Farm environmental Management Plan		Nutrient Budget
	Yes		

Report

Drainage:

Internal drains are acceptable. Member of the Lower Mataura Drainage Scheme. Titiroa stream cleaned Jan 2022.

Weed Spraying:

Isolated and scattered gorse on riverbank and gorse in gullies on floodfree.

Pasture:

The river flat and floodfree pastures are good – well managed. Winter crop in P24, P27 & P28. New grass in P25 & P29.

Fences/Gateways:

Fencing maintenance continues. Double gates installed into floodfree following upgrade of Highway.

Water Supply:

Water supply scheme on river block was upgraded in 2004 – 16 troughs serviced from bore and pump adjacent to woolshed.

Floodfree block has water scheme servicing 3 troughs on hill upgraded to take in all the Stirling floodfree blocks June 2012.

Access Maintenance:

Gravel lanes on the floodfree and floodable acceptable.

Buildings:

Woolshed not utilised – condition is acceptable but roof showing rust and borer evident inside.

Old disused dairy shed next to cattle yards. 3 bay haybarn next to SH92 on north boundary.

Health and Safety:

Has a Health and Safety plan. There are no new hazards.

Lessee Compliance:

No compliance issues.

Considerable improvements have been made to pastures, fencing and water supply in recent years.

Two gullies planted half in Totaras/ pines.

Erosion of river bank adjacent to cattle yards is an historic issue (rock protection in 2004 & 2010) and is need of constant attention. Investigation into three more places of slumping bank. In the CMA area.

District:	Ferry Road	Block:	Penno
Name:	RW Cresswell	File No:	qA155
Address:	Hughes Road, No 9 RD, Invercargill	Area:	76.4448 ha
Date Inspected:	26.9.23		
Lease Details:			
Term:	3 years	Expires	30 September 2026
	Farm Environmental Management Plan		Nutrient Budget
	Yes		

Report

<p>Drainage: Some drains cleaned. The remainder sprayed. Leaseholder has own digger.</p>
<p>Weed Spraying: Annual programme to address areas of minor gorse and ragwort. Few issues.</p>
<p>Pasture: Floodway land pastures are low and wet – previous borrow area for Oreti Flood Scheme stopbanks. These paddocks have benefited from fertiliser and good grazing management by the current leaseholder but rushes continue to be an issue – annual topping and control work needed to keep on top of regrowth. The floodfree land to the east of the main block is in very good condition.</p>
<p>Fences/Gateways: Some internal fences need renewal on both the floodway and flood free land – upgrading progressing. 400m new fencing.</p>
<p>Water Supply: Penno water scheme has been refurbished to service the floodway and floodfree land and the Burgess and Murphy block as well as Pascoe and Donaghy. Having supply issues with the bore.</p>
<p>Access Maintenance Gravel access lane to service the floodfree land has been gravelled and in good condition. Lane access to sheds is acceptable.</p>
<p>Buildings: 5 bay haybarn (approx 18 years old) in good condition. Roof railed Dec 2021. House upgraded 2017 after existing tenant moved out. House is now part of the Penno block. Proposal for a new septic tank system in the consented, now the weather for installing it.</p>
<p>Health and Safety: Leaseholder has a plan and no new Hazards.</p>
<p>Lessee Compliance: No compliance issues. Current leaseholder has completed significant improvements to this property – pasture through fertiliser and good management and renewal, rush control, fence maintenance, water scheme upgrade and development progress in the peat block.</p>

District:	Kingswell	Block:	Smille
Name:	Russell Jack	File No:	qA112
Address:	PO Box 78, Winton 9741	Area:	8.64 ha
Date Inspected:	18.9.23		
Lease Details:			
Term:	3 years	Expires	30 June 2026
	Farm Environmental Management Plan		Nutrient Budget
	N/A area to small		

Report

<p>Drainage: No open drains. Kingswell Stream runs through this property.</p>
<p>Weed Spraying: No weed issues.</p>
<p>Pasture: Pasture have been renewed in recent years and developed as part of adjoining freehold unit – used for dairying.</p>
<p>Fences/Gateways: Good electrified internal and berm fencing. Not all boundaries are fenced. ES floodway land in incorporated into freehold paddocks.</p>
<p>Water Supply: ES floodway land serviced from Leaseholders freehold.</p>
<p>Access Maintenance Access via adjoining freehold lane and gateways. Dairy lane and culvert over Kingswell Creek constructed.</p>
<p>Health and safety: Leaseholder has a plan. No new Hazards.</p>
<p>Lessee Compliance: No compliance issues – well managed. Part of a dairy farm. New Leaseholder 1 Jun 2016. Note: This property has no legal access.</p>

District:	Mataura	Block:	Smith
Name:	John Smith	File No:	qA126
Address:	Titiroa No 1 RD, Wyndham	Area:	105.24 ha
Date Inspected:	29.8.23		
Lease Details:			
Term:	5 + 5 years	Expires	1 January 2026
	Farm Environmental Management Plan		Nutrient Budget
	Yes		

Report

<p>Drainage: Internal drains are acceptable. All sprayed. Riverside drains cleaned.</p>
<p>Weed Spraying: No weed issues.</p>
<p>Pasture: Front blocks are good. Progressive improvements to peat blocks to the east of property by improving drainage.</p>
<p>Fences/Gateways: Fence maintenance required after flooding planned. New fence erected to stop stock getting on to the road via the river berm.</p>
<p>Water Supply: Operative water scheme services entire block. Bore has been cleaned 2015. Some trough surrounds gravelled.</p>
<p>Access Maintenance: Access is acceptable.</p>
<p>Buildings: No buildings. Combined sheep and cattle yards at SH 92 entrance are old. Three areas rocked in cattle yards. The loading ramp at the yards has been turned so trucks loading and unloading are off the road.</p>
<p>Health and Safety: Lessee has a plan. No new hazards.</p>
<p>Lessee Compliance: No lease compliance issues. All bush reserves (four in total) have been fenced out – largest is subject to a QE11 covenant This property is a well managed.</p>

District:	Mataura	Block:	Stirling
Name:	S McKenzie	File No:	qA114
Address:	Fortrose No 5 RD, Invercargill	Area:	116.32 ha
Date Inspected:	29.9.23		
Lease Details:			
Term:	Amalgamated with Walsh Block term 5 years.	Expires	31 December 2023
	Farm Environmental Management Plan		Nutrient Budget
	Yes		

Report

Drainage:

Main outfall through centre of river flat, mechanical cleaned, water levels low in other drains. Redeveloped pastures at bottom of terrace have new drains installed. Gullies tiled. Issue with the tide bank at the south of property letting in water on the bigger tides. The existing banks has two holes in it. This is in the CMA and requires a consent to repair. Low lying areas getting wet more often, always with the big tides.

Weed Spraying:

Scattered gorse along a number of fences, floodfree gully and hillside sprayed.

Pasture:

Pastures acceptable.

Fences/Gateways:

Floodfree land has good fences on the boundary and internal fencing requires some work or renewed. No winter crop but did have a balage grass operation going in one floodfree paddock.

Water Supply:

New bore and stock water scheme installed in 2005 – services O'Neill block and Stirling (Keenan) riverflat blocks. Bore water full of iron.

Access Maintenance

Access lane south of house to river flat regavelled in 2006 from on site gravel pit. Gateways and other access are well maintained.

Buildings

2 story homestead is in fair condition. Improvements over the last 9 years include: exterior painting, new windows on weather side, west half of roof replaced, new cladding to dormer roof, new range, new fire, living area enlarged, DVS ventilation system installed, 2 bedroom upgrade, carpeting, batts in the ceiling and polythene laid under floor. Air conditioning unit installed in the hallway 2011. New range Sept 2014. Roof replaced July 2015.

Farm buildings – haybarn/implement shed, woolshed in fair condition – woolshed reroofed July 08.

New yards built to the south of the house on the flood free. New range in house Sept 2014.

Septic tank upgraded June 2015. Kitchen upgraded and Ceiling in lounge repaired, Power upgraded, board replaced, Oct 2019.

New taps bathroom Oct 2020.

Health and Safety:

Scott has a health and safety plan for his freehold and Leasehold land.

Discussed new hazards and with it being the whitebait season there are a lot of extra people, vehicles and boats around the area of leasehold land.

Lessee Compliance:

Leaseholder has completed huge improvements to this property through pasture renewal/refurbishment, fencing, drainage, water scheme and improvements to house and surrounds.

Titiroa wetland developed during 2002 excludes a total of 110 ha of the Titiroa Stream margins below SH 92 from stock access and farming use. This is now completely fenced out to the south east as well.

District:	Mataura	Block:	Welsh
Name:	K Brash	File No:	qA127
Address:	695 Waituna Road, 3 RD, Wyndham 9893	Area:	23.09 ha
Date Inspected:	6.9.23		
Lease Details:			
Term:	5 years	Expires	30 June 2023
	Farm Environmental Management Plan		Nutrient Budget
	Yes		

Report

<p>Drainage: Road drain cleaned May 2016.</p>
<p>Weed Spraying: No weeds.</p>
<p>Pasture: Pasture is acceptable. Old rushes topped. Subdivision is into two paddocks, one of which serves as a holding paddock in all but major flood events.</p>
<p>Fences/Gateways: Roadside boundary fence needs upgraded. Subdivision of larger block needed to assist stock and pasture management but care will be needed to locate new fences and avoid potential flood damage.</p>
<p>Water Supply: The water scheme has two troughs in operation from the Brash block.</p>
<p>Access Maintenance Access off side road adjacent to Gorge Road Highway - good gravel access. North access gravelled.</p>
<p>Health and Safety: Leaseholder has a plan, no new hazards</p>
<p>Lessee Compliance: No compliance issues. As this block has been amalgamated with the Brash block. Overflow embankment in along the total length of Mataura River is affected by river erosion.</p>

District:	Te Anau	Block:	Te Anau Pest Property 2 of 3
Name:	E S staff house	File No:	423/01/04
Address:	Rapid No 5, Te Anau/Manapouri Highway	Area:	Approx 1,000 m ² , part of 8.2857 ha
Date Inspected:	27.9.23		
Lease Details:			
Term:	Staff tenancy from 22 November 2007	Expires	N/A

Report

Section/Land:

Approx 1,000 m² – part of larger 8.28 ha block. Trees removed south boundary and along driveway entrance. Quite tidy.

Buildings:

3 bedroom brick and roughcast house - late 1950s vintage. Last major interior refurbish undertaken in 1995 – needs interior repainting. Paint supplied to tenants in July 2006 to enable them to commence repainting of bedrooms – three bedrooms completed to a very good standard – propose to paint hall and lounge this year but issue with leak in old now disused chimney to be resolved first. Adjacent double garage with attached coal/wood shed/workroom in tidy condition. Electric range replaced August 1998, Kitchen plumbing upgraded in September 1999 (old galvanised pipes under house are an issue – rust/slag), lounge carpet replaced October 2001, shower installed over bath, new window, painting in bathroom in July 2002, Insulation installed May 2005 (only half of house was insulated). House is fitted with two external pressure reducing valves, one of which required replacement in July 2007 due to frost damage. House painted outside. December 2010. Insulation installed in the ceiling March 2011. An outside tap installed. Two new heat pumps installed August 2012. Spouting cleaned June 2016. Painting the bathroom 2017. Smoke alarms installed. New fire extinguisher 2023.

Maintenance Requirements:

House exterior – wooden windows are in need of replacement in coming years depending on ownership. Painting the kitchen area. Water is supplied to house via town supply main at other house driveway that services all the property facilities (two houses and depot buildings). There has been a lot of issues with this water on both properties whether supply, leaks or the pump breaking down so we removed the pump from the line and now use the towns mains pressure which seems to be working okay.

District:	Te Anau	Block:	Te Anau Pest Property 1 of 3
Name:	Biosecurity – animal pests	File No:	423/01/04
Address:	Te Anau/Manapouri Highway	Area:	8.2857 ha
Date Inspected:	27.9.23		
Lease Details:			
Term:	Closed Depot	Expires	N/A
Lease Details:			
Land is now leased to Logan Hollis and Danica Tauri			

Report

Section/Land:

Approximately 20 acres in grass paddocks. Property is generally tidy with reasonable boundary and internal fences.

Buildings:

4 bay garage/workshop - cladding is unpainted galvanised corrugated iron. Concrete block storage/office/poison shed with attached carport. This building has water and power but no kitchen facilities. Part of shed used by the Harbour master to house the boat.

Office/poison shed block and smoko room, painted Dec 2009. Replaced weather boards on hut with hardy glaze at the same time.

Maintenance Requirements: