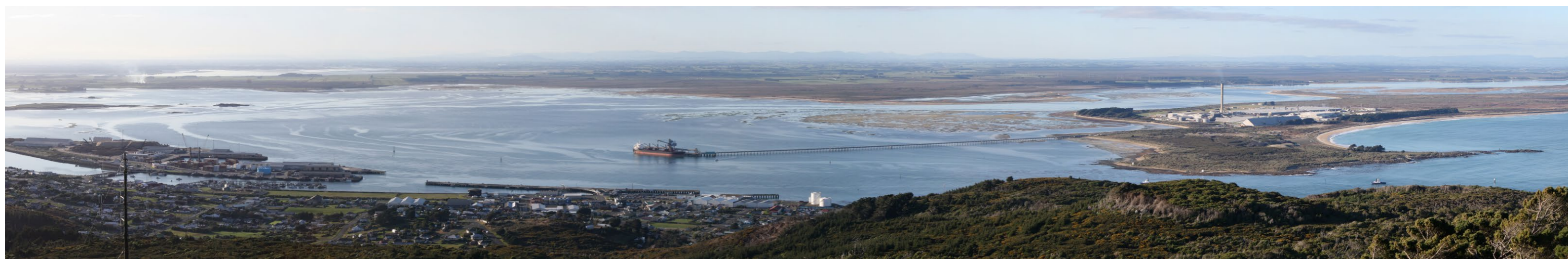


Graphic Supplement

Evidence, M W Moore

March 2022

Bluff Harbour Capital Dredging Project
Natural Character, Landscape and Visual Effects



MIKE MOORE

Bsc, Dip LA, MRRP, ANZILA

LANDSCAPE ARCHITECT

PO Box 5076, Dunedin

Tel (03) 479 0833 . Cell 0274 360 163

Email mike@mmla.co.nz



Figure 1 : View across the Bluff Harbour entrance from Tiwai Point



Figure 2 : View north-westward, across the Bluff Harbour from Tiwai Point



Figure 3 : View across the Bluff Harbour entrance from Stirling Point



Figure 4 : View toward Bluff Harbour from Burrows Street, Bluff



Figure 5 : View toward the proposed land based rock disposal site from State Highway 1 near Ocean Beach Freezing Works.



Figure 6 : View across the Bluff Harbour from Bluff Hill (Motupohue)



Figure 7 : View eastward across the sediment disposal site from Tiwai Point



Figure 8 : View westward toward Tiwai Point from the beach approx. 3km east of Tiwai Point



Figure 9 : View north-eastward across Tiwai Point from the Stewart Island ferry near the Bluff Harbour entrance



Figure 10 : View of the harbour entrance from the water



Figure 11 : View of Bluff Harbour looking northward from near the Stewart Island ferry terminal

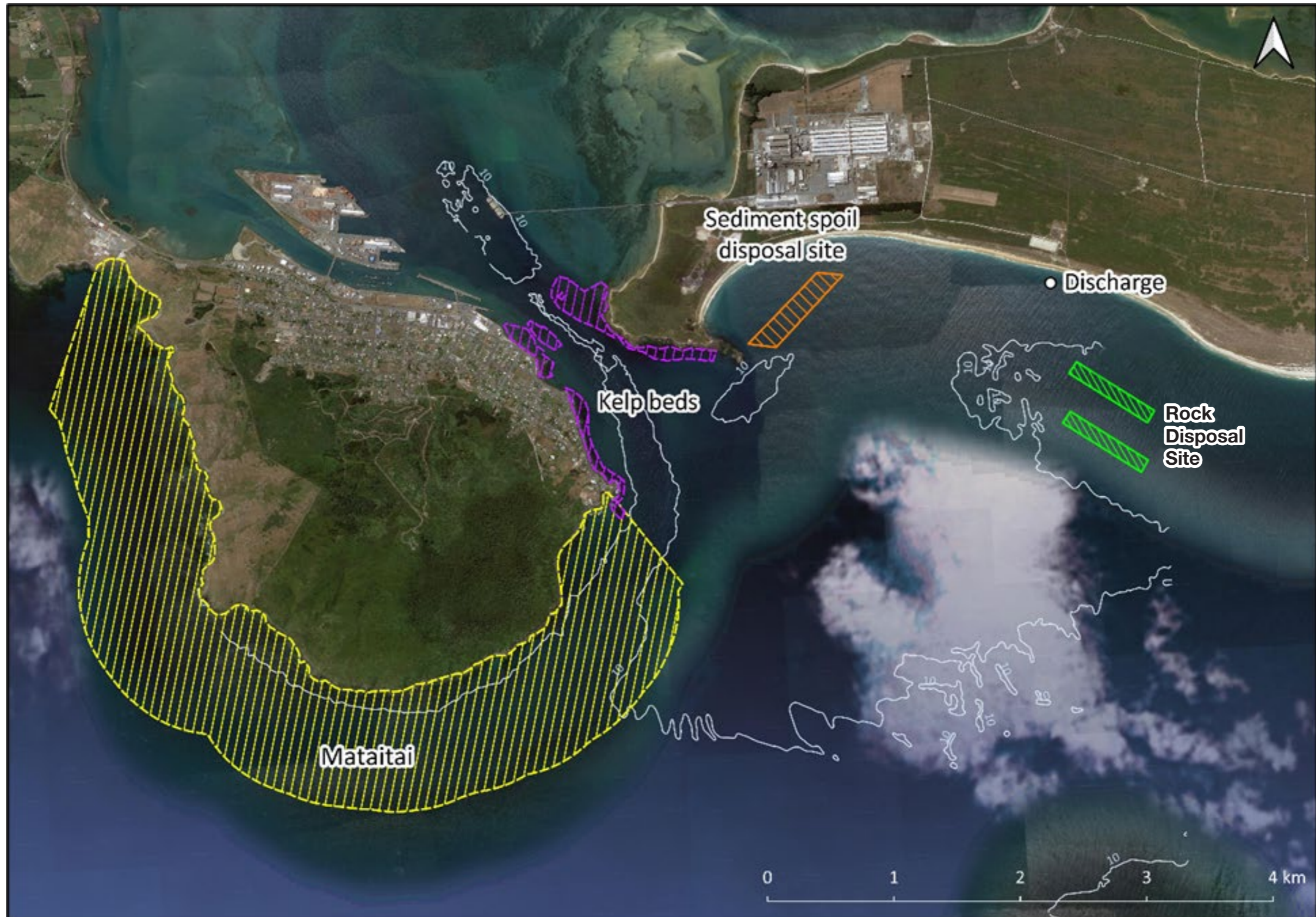
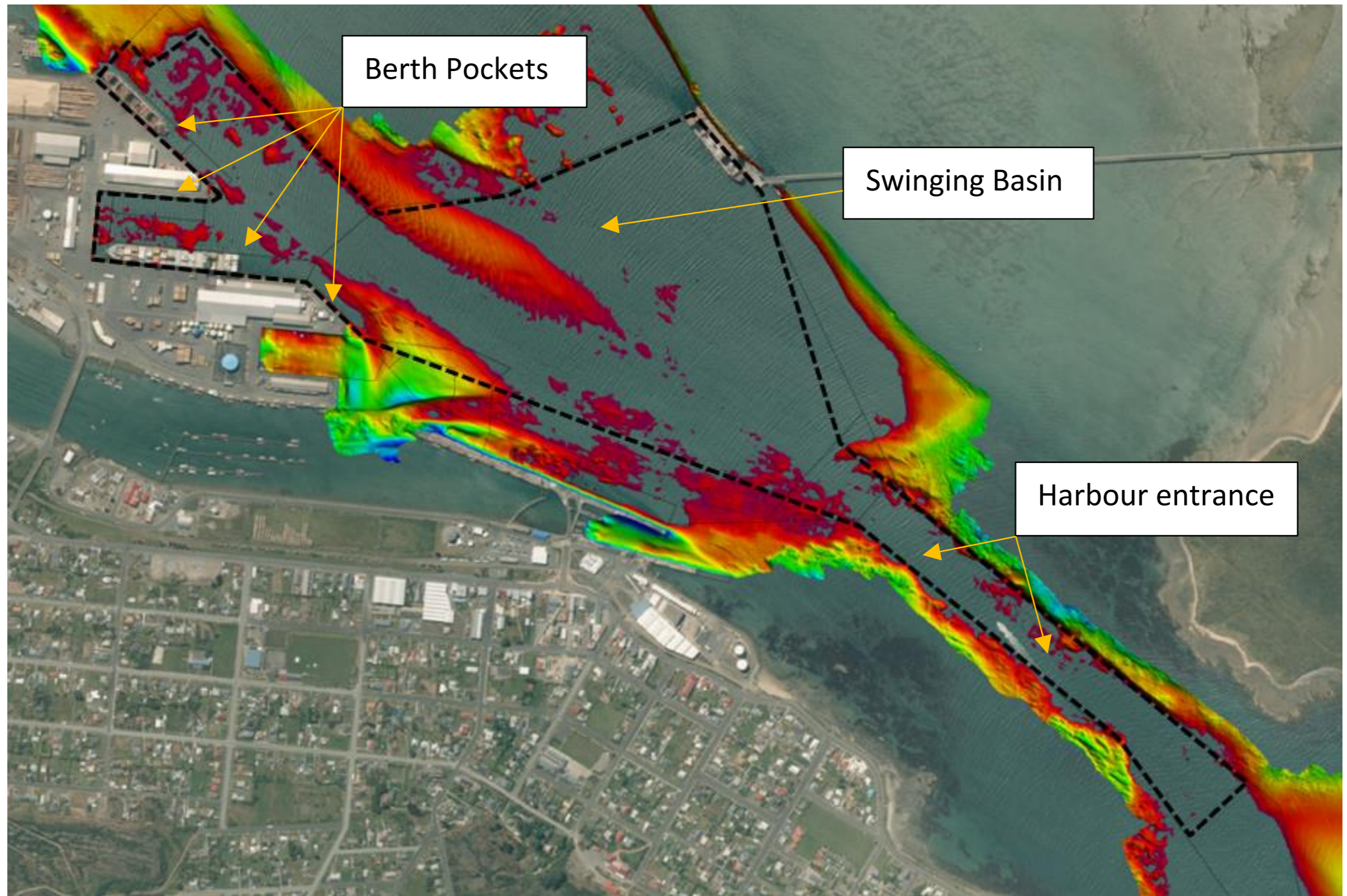


Fig 12: Disposal Sites



----- Area to be dredged

Figure 13: Area to be dredged



Figure 14: Water boil effect from underwater blasting (indicative only)



Figure 15: Sediment plume effect from dredging / sediment or rock deposition to sea (indicative only)